




KINGSHAVEN



A MARKHAM-STOUFFVILLE COMMUNITY
BY THE KINGSMEN GROUP

A woman with long dark hair, wearing a bright yellow top and large white circular earrings, is shown in profile, looking upwards and to the right. She is surrounded by a dense field of tall corn stalks, with the leaves and husks creating a textured, green background. The lighting is soft and natural, suggesting an outdoor setting.

Your home at Kingshaven is calm, quiet, comfortable. It's nestled in a community inspired by Stouffville's rich rural history. Farms, forests, and rolling hills sprawl through the township. Here, your home is more than your home.

**YOUR HOME
IS YOUR HAVEN.**



AN ONTARIO FIRST, AGRI-COMMUNITY

Kingshaven is a master-planned community at the border of Markham and Stouffville, near Highway 48 and 19th Avenue. Kingshaven offers the comforts of the beautiful countryside and the urban conveniences of one of the GTA's largest cities. Your lifestyle here is one in perfect balance.

SPRING LAKES GOLF CLUB

DOLLARAMA

CANADIAN TIRE

WALMART

MAIN STREET STOUFFVILLE

FUTURE SPORTS FIELDS

HIGHWAY 48

FUTURE FARMERS MARKET

FUTURE COMMUNITY CENTRE

Site Plan is not to scale. All dimensions are approximate only. Sole purpose of plan is to show approximate location of a lot/block within a subdivision. The numbering, size, dimension, area, shape and location of the lots/blocks may vary from what is shown on the plan. The Vendor tries to ensure the accuracy of the information at the time the plan is prepared, however, modifications to the plan may have occurred since its preparation. Distances shown are in meters and can be converted to feet by dividing 0.3048. E & O.E.



INSPIRED BY NATURE, DESIGNED WITH CARE



The homes of Kingshaven have been beautifully designed as part of a nature-inspired, master-planned community. The neighbourhood will be shaped by pockets of protected green space, community gardens, a proposed school, and a proposed community centre. Here you can expect to find carefully selected finishes, thoughtfully laid out floor plans, and stunning living spaces.





FEAST ON FRESH

ENJOY FARM-TO-TABLE LIVING AND
LOCALLY OWNED RESTAURANTS

At Kingshaven, you have access to farm-fresh produce and meats from local farmers. Enjoy fresh honey, cider, and eggs from Willowgrove Farm, or locally sourced meats from The Meat Merchant. Just down the road, Reesor's Market & Bakery sells fresh groceries and oven-ready dinners.



Stouffville also has a wide selection of independently owned restaurants. The King's Landing Bar & Grill serves elevated takes on classic dishes, and Mainstreet Stouffville has a collection of restaurants, cafés, and dessert shops.

THE COUNTRYSIDE



DISCOVER THE NATURAL
SPLENDOR OF STOUFFVILLE

Take long walks at Stouffville Conservation Area or visit the water at Musselman's lake. And at Kingshaven, you'll have parkettes, dog parks, and walking paths right on your doorstep.

THE CITYSCAPE



ENJOY THE CONVENIENCE OF MARKHAM



At Kingshaven, you'll find big box stores right across the street and exclusive brand-labels just a short drive away. At Markville Mall and Downtown Markham you have a wide variety of shopping, dining, and entertainment options.



COMMUNITY-CENTRED LIVING

SCHOOLS AND COMMUNITY CENTRES



Stouffville has great schools, libraries, and community centres. The Clippers Sport Complex is the local destination for skating and hockey lessons, while the Whitchurch-Stouffville Leisure Centre offers swimming lessons and drop-ins.

In addition to fantastic public schools, at Kingshaven you'll also have access to specialty or private school options including the theatre program at Unionville High School and the athletics program at Bill Crothers Secondary School.



HAVE FUN

FAMILY-FRIENDLY EVENTS AND ACTIVITIES



Markham Fair is the area's annual fall festival, featuring Ferris wheels, food booths, and live performances. The Wintersong Festival is Stouffville's annual January music celebration and showcases the city's local artists.



You can also enjoy family-friendly activities at Treetop Trekking Stouffville, Willowgrove Farm, or Timber Creek Mini Golf & Fun Centre.

COMMUTE WITH EASE



TRAIN AND BUS SERVICE TO TORONTO

Trains leave in the morning from Old Elm and Stouffville GO and arrive at Union Station in just over an hour. Bus connections also run to and from Markham GO, for an easy and comfortable commute. In the coming years, these lines will offer all-day, two-way train service every 15 minutes.



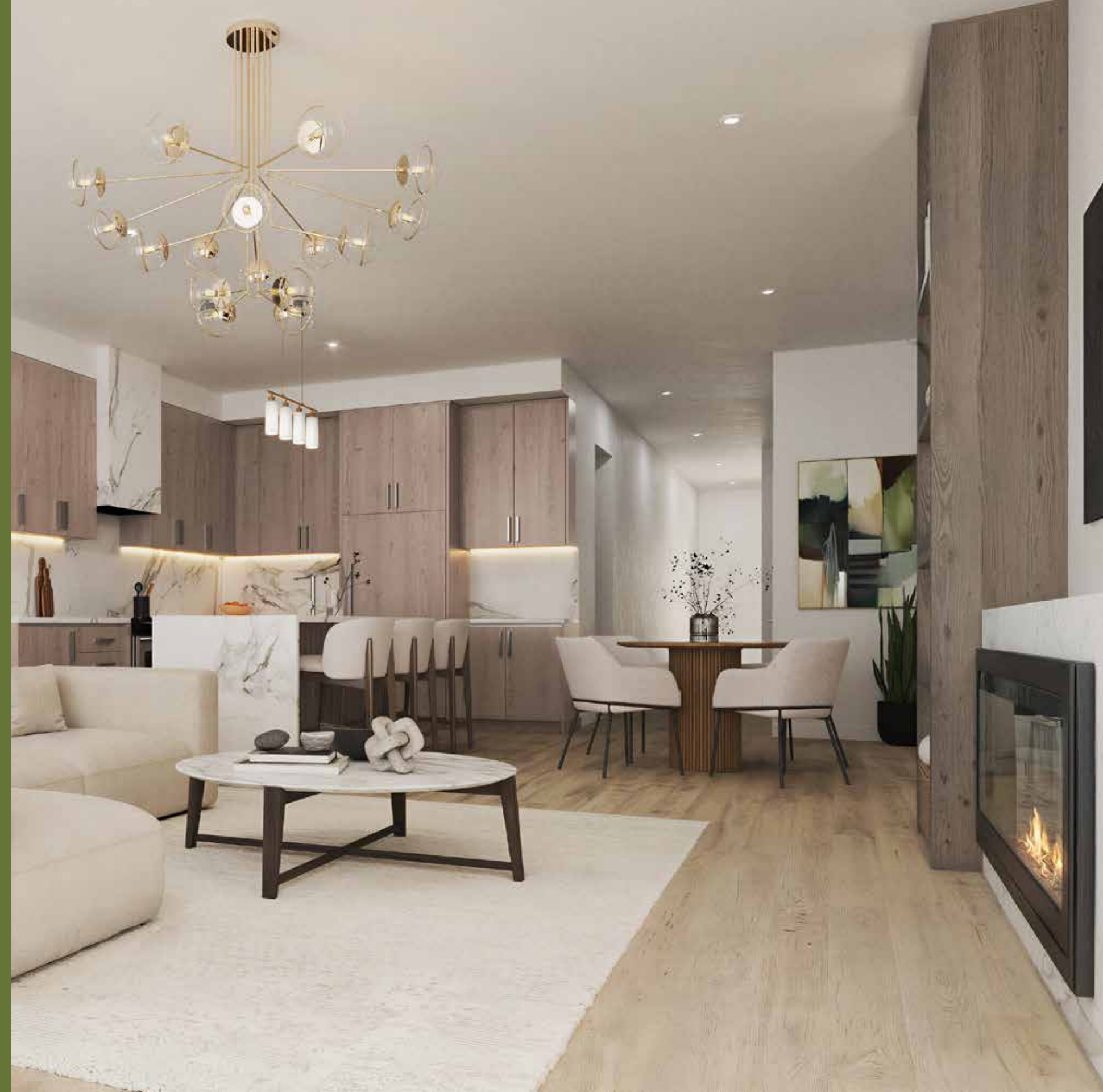


MAKE YOUR HOME YOUR OWN



OUR DESIGN STUDIO

The Kingsmen Group's team of design experts can help you make your home your own. Premier features, finishes, fixtures, backsplashes, accents, hardware, and most importantly, experienced advice to help you put it all together. We have a wide selection of custom options that will make your home the one you always wanted.





THE KINGSMEN GROUP STORY

33 YEARS OF EXPERIENCE

15 COMMUNITIES

10,700 HOMES

“We understand that while a great lifestyle starts inside a home, it extends well beyond its walls. That’s why our communities are enhanced by amazing locations, where you can live, play, grow and be inspired. In the end, we’re not just creating a new neighbourhood, we’re building the confidence of our homeowners.”

— Matthew Castelli
President of The Kingsmen Group

The The Kingsmen Group lineage of excellence started over 33 years ago. Over the decades, we’ve delivered premium quality and value across each of our communities. Craftsmanship means everything to us – it not only defines who we are today, but our entire legacy. Our greatest gratification comes from seeing satisfied homeowners who have entrusted us with their greatest investment.





THEKINGSMEN.CA

KINGSIIEN
GROUP INC.

