

MASTER PLAN



KINGSHAVEN

A MARKHAM-STOUFFVILLE AGRI-COMMUNITY
BY THE KINGSMEN GROUP

THE MASTER PLAN

Markham/Stouffville's First Ever Agri-Community

Kingshaven is Markham/Stouffville's first ever agricultural community, a neighbourhood that combines the modern comforts of suburbia with farm-to-table living. Featuring communal gardens and green spaces as the central amenity, here is what life at Kingshaven might look like for residents...

Communal Gardens

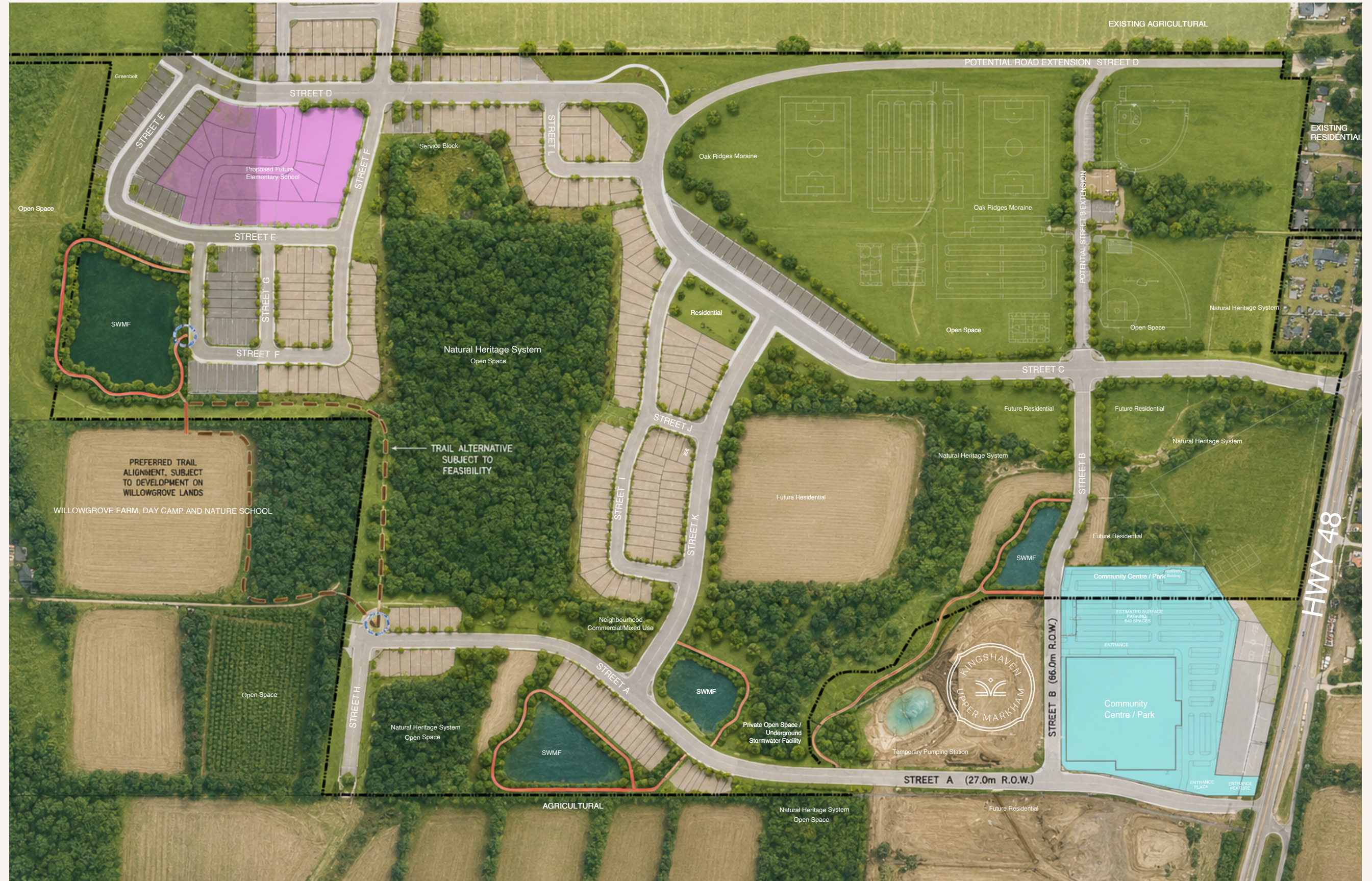
To supply you with fresh produce as well as regular community events like harvest dinners, markets, and more as the seasons change.

Open, Eco-Friendly Green Spaces

Planned and self-sustaining to support local biodiversity and to give you spaces to walk, ride, play, and enjoy.



Site Plan is not to scale. All dimensions are approximate only. Sole purpose of plan is to show approximate location of a lot/block within a subdivision. The numbering, size, dimension, area, shape and location of the lots/blocks may vary from what is shown on the plan. The Vendor tries to ensure the accuracy of the information at the time the plan is prepared, however, modifications to the plan may have occurred since its preparation. Distances shown are in meters and can be converted to feet by dividing 0.3048. E. & O. E.



KINGSIIEN
GROUP INC.

