

REESOR RIDGE  
AT WISMER





REESOR RIDGE  
AT WISMER

TREASURE HILL





## THE KEY TO BETTER LIVING

Unlock your life's potential and discover everything you have been searching for. Reesor Ridge at Wismer will offer the lifestyle you deserve. Located in Markham in the established community of Wismer Commons, you will be situated in the ideal place for convenience and comfort. Reesor Ridge is your key to better living.



# A LIFE OF LUXURY



Each home at Reesor Ridge is designed to elevate and enrich your life. The design is in the details and every single element in every home has been thoughtfully planned to create a space you will love both aesthetically and practically. Inside and out, careful attention has been placed to ensure you live in your dream home.





# NEIGHBOURHOOD



## Family Friendly

At Reesor Ridge, the surrounding landscape is ideal for you and your loved ones, offering close access to all the places you need including prestigious schools, parks and recreational fields, family friendly restaurants, and so much more. When you live at this convenient location, you will be able to enjoy everything life has to offer and make the most of your neighbourhood.







# THE ART OF LIVING

## AMENITIES

### In Markham

When everything comes together, from the details to the location, a home is elevated. Reesor Ridge in Markham is a community where residents can feel comfort knowing that the surrounding area is established and packed with amenities. From retail centres, to big box stores, to public transit, to greenspace, there is not a single element that is missing.



# INDULGE



## DINING

They say to enjoy the finer things in life, but better yet, you can enjoy the finer foods in life. At Reesor Ridge, there are plenty of local restaurants as well as popular chain establishments within minutes. Take your pick and find your favourites or try them all and mix it up.

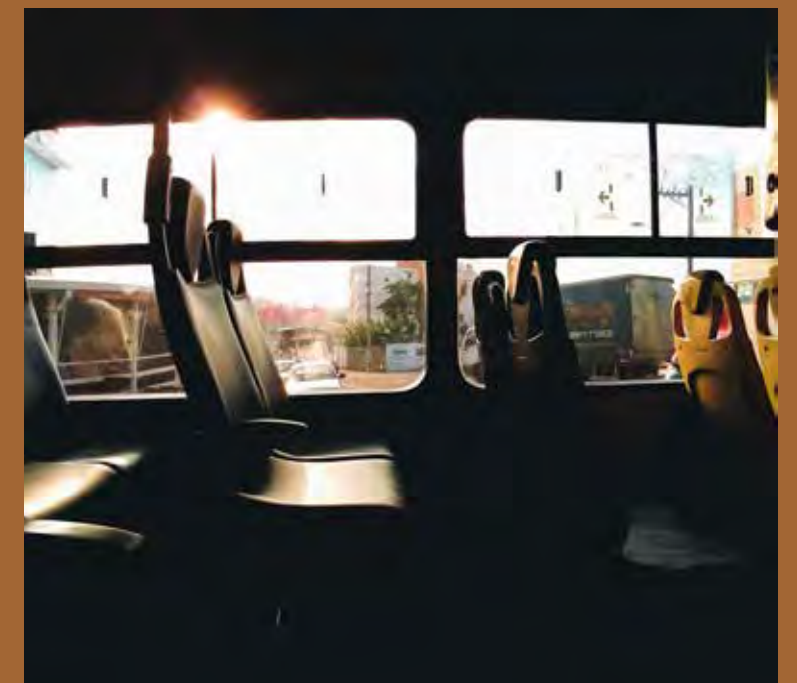


## SHOPPING

Markham is home to the popular shopping centre, Markville Mall, which encompasses over 160 stores and services and is located just a short drive from Wismer Commons. Plus, there are tonnes of local shops and retail stores in the many plazas across the city for you to enjoy.

## TRANSIT

When you live in the Wismer Commons area, getting around is effortless with quick access to major highways 407 and 404. Public transit is also easily accessible with YRT bus stops within reach and GO Transit just around the corner.





# HIGHER LEARNING

## EDUCATION

Markham is renowned for their education system, with a large proportion of the city's schools ranking above 7.6 on the Fraser Institute School Rankings at both the elementary and secondary level. There are also post-secondary options at Seneca College's Markham Campus, where a variety of programs are offered.



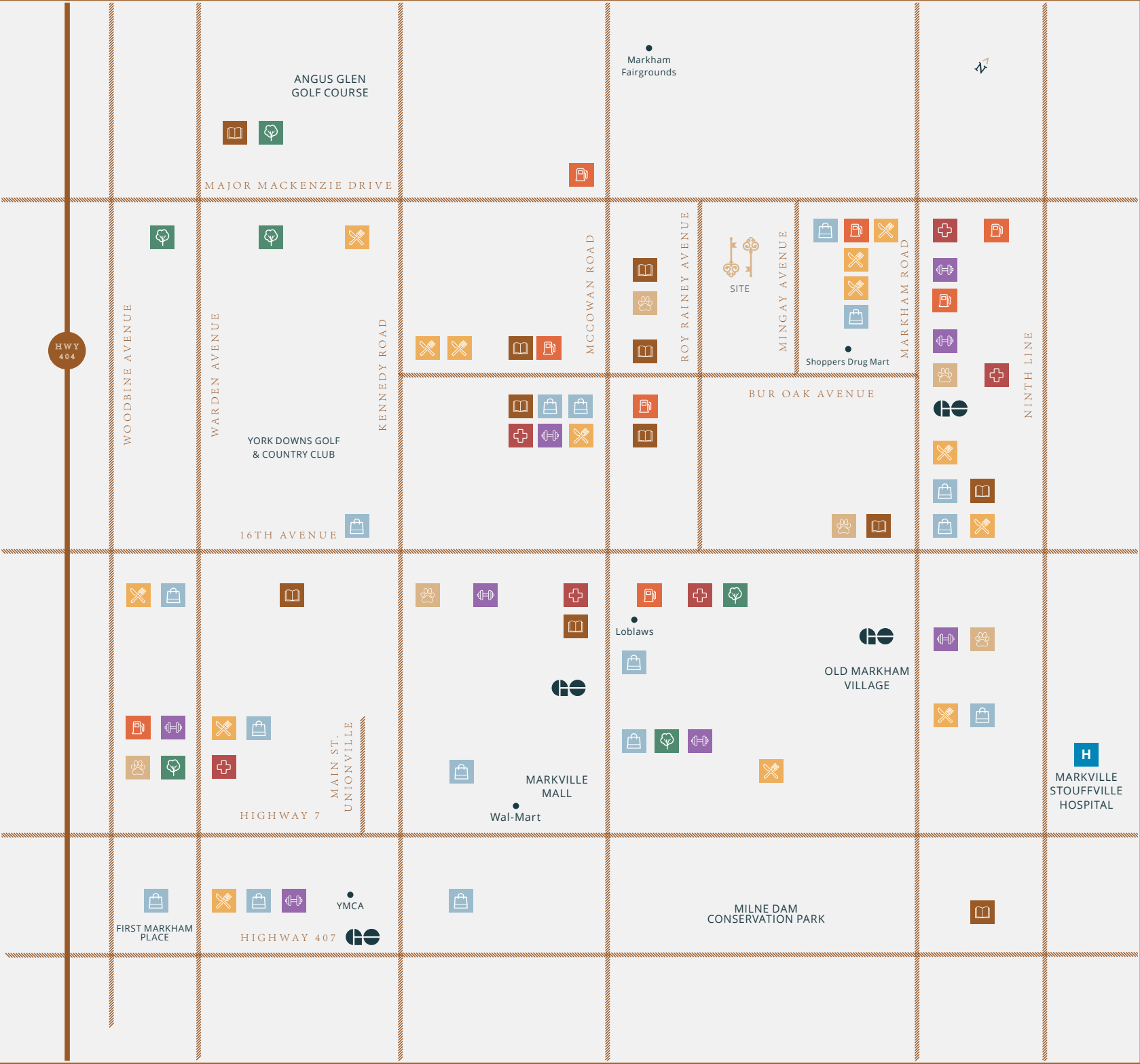
# FRESH

## PARKS AND RECREATION

Wismer Park is just moments from Reesor Ridge, and provides access to stunning greenspace as well as a playground, tennis courts, a splash pad, and a basketball court. The city of Markham is also home to several golf courses and hiking trails, so getting out and being active is always an option.



# AREA OF EXPERTISE



- DINING
- FITNESS CENTRE
- DOCTOR/DENTIST
- PARK
- SHOPPING
- SCHOOLS
- VETERINARIAN



Located at Major Mackenzie Road, west of Markham Road, Reesor Ridge merges luxury living with ultimate convenience. Discover living near Markham's most popular recreation centres, restaurants, shops, schools, and more.







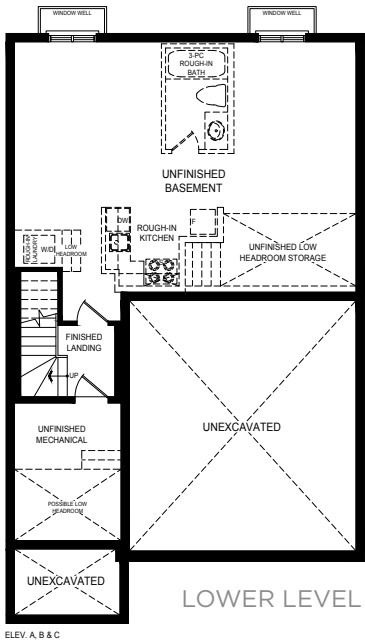
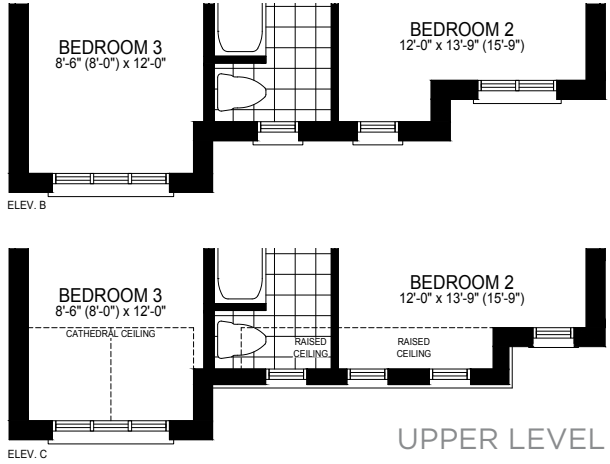
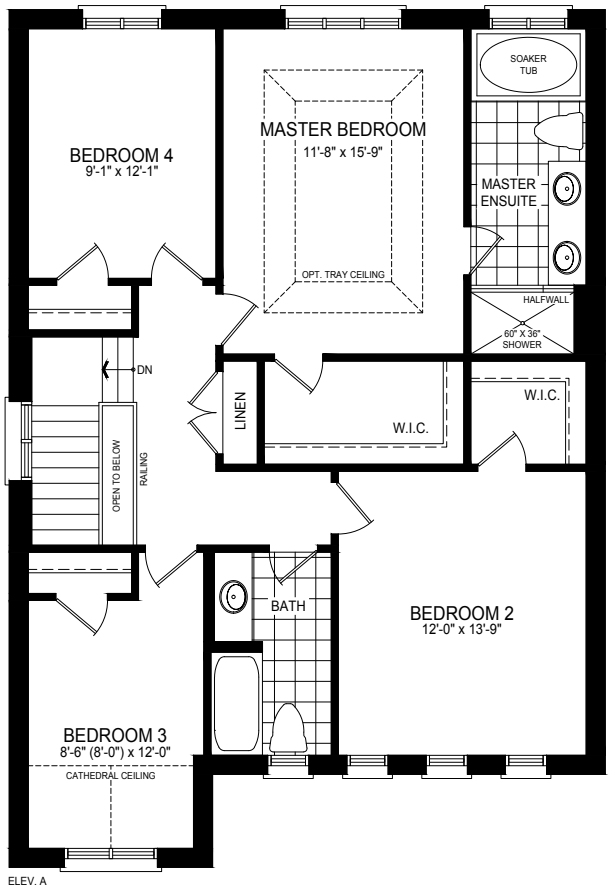
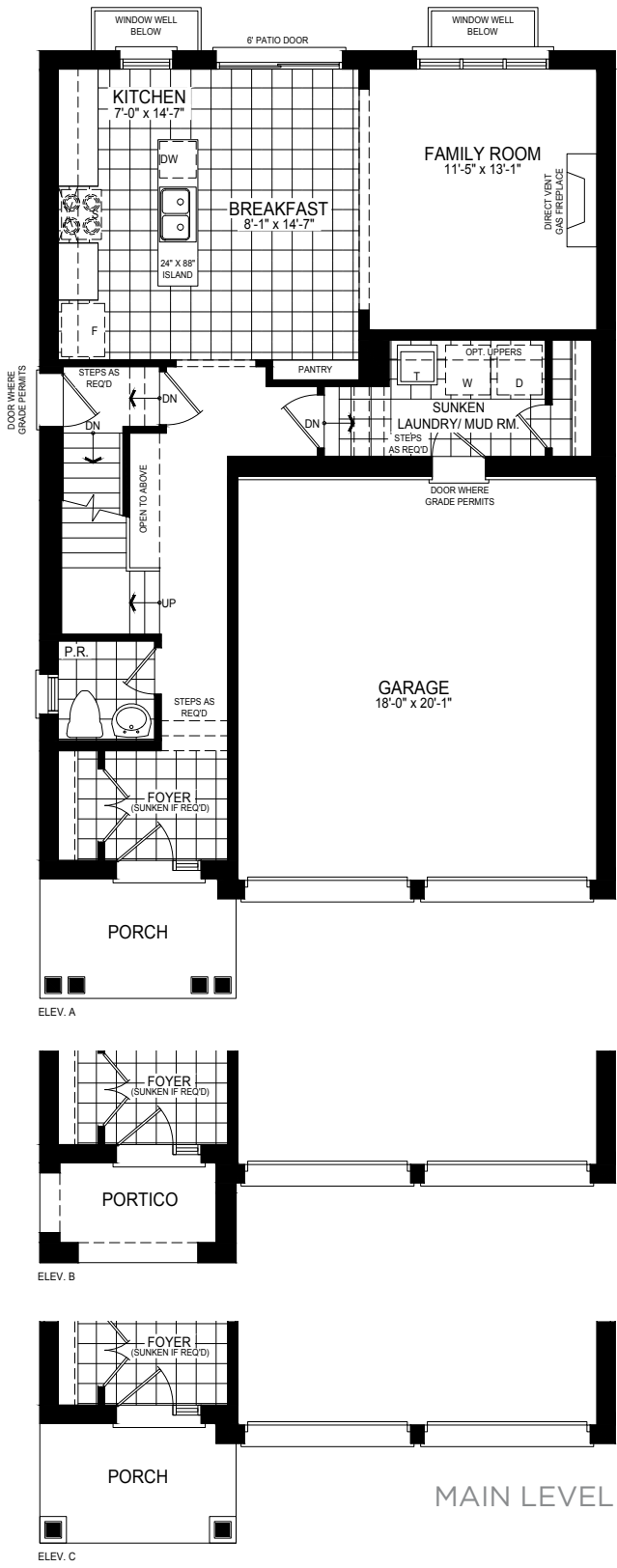




# PALMERTON ONE

INCLUDES 10 SQ. FT. OF OPEN AREA  
INCLUDES 35 SQ.FT. OF FINISHED BASEMENT AREA

35'LOT



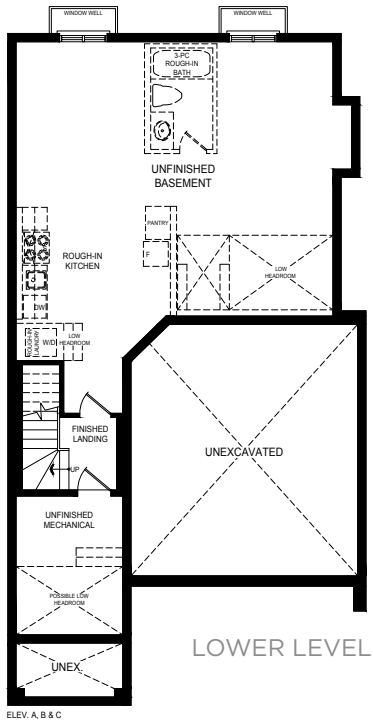
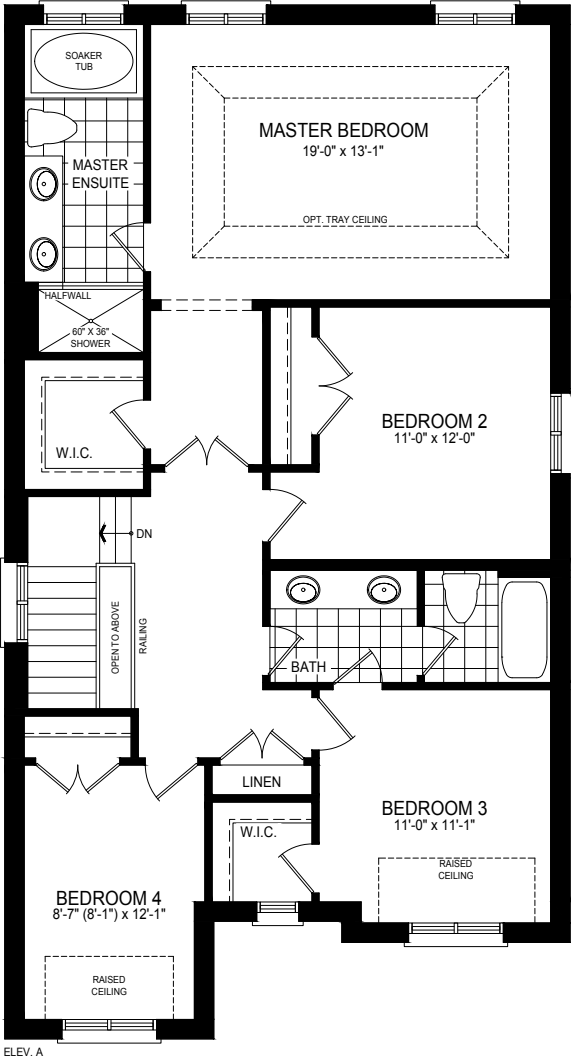
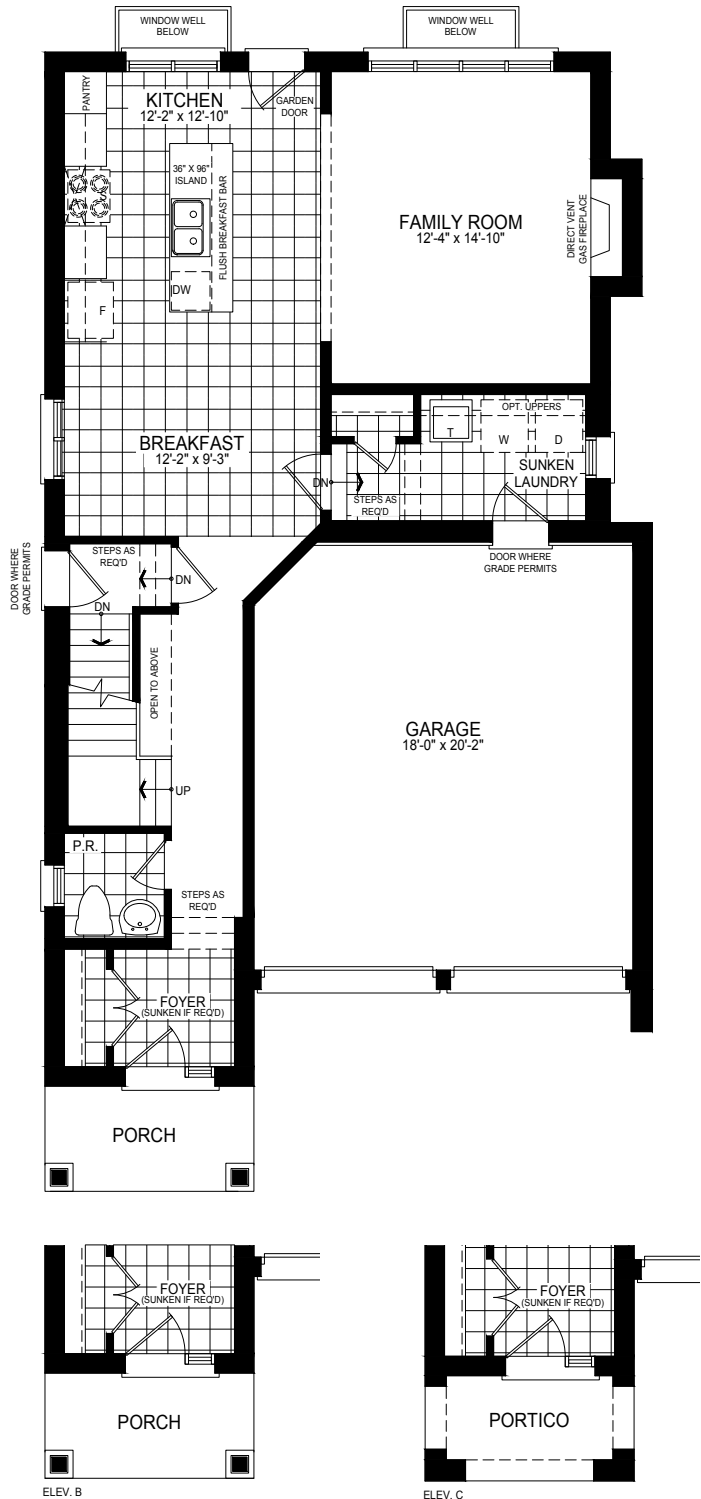
Steps and porches may vary at any exterior or garage entrance ways due to grading variance. Actual usable floor space may vary from stated floor area.  
All renderings are artist's concept. Dimensions, specifications, architectural and mechanical detailing are approximate and subject to minor modifications. E. & O. E.



PALMERTON TWO

INCLUDES 10 SQ. FT. OF OPEN AREA  
INCLUDES 35 SQ.FT. OF FINISHED BASEMENT AREA

35'LOT



Steps and porches may vary at any exterior or garage entrance ways due to grading variance. Actual usable floor space may vary from stated floor area. All renderings are artist's concept. Dimensions, specifications, architectural and mechanical detailing are approximate and subject to minor modifications. E. & O. E.



# PALMERTON THREE

35'LOT

INCLUDES 10 SQ. FT. OF OPEN AREA  
INCLUDES 35 SQ.FT. OF FINISHED BASEMENT AREA

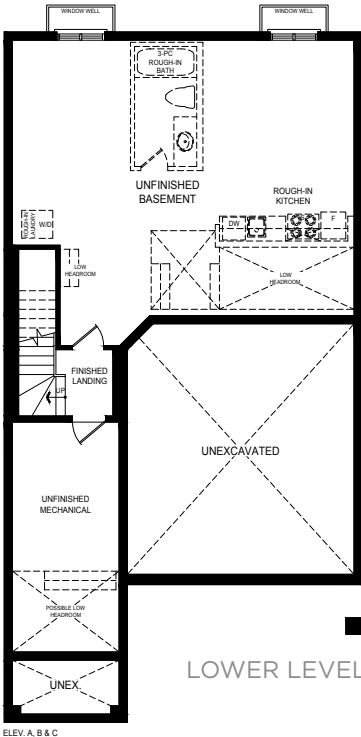
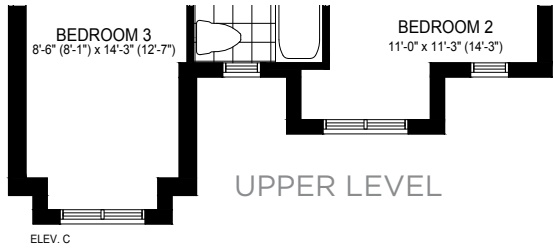
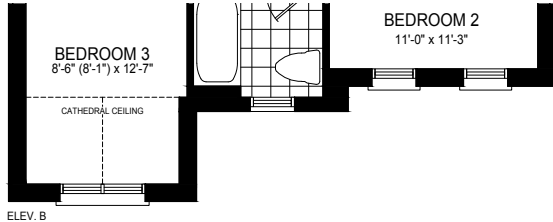
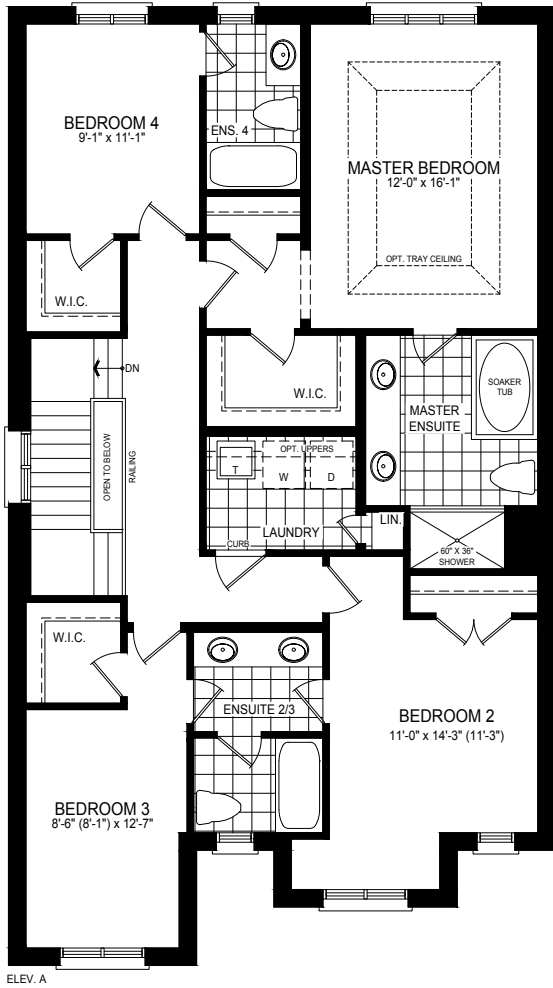
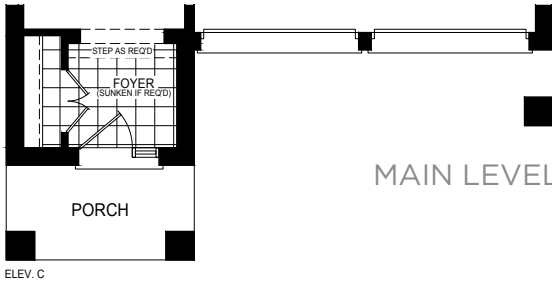
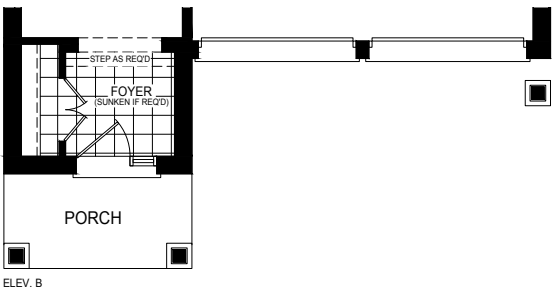
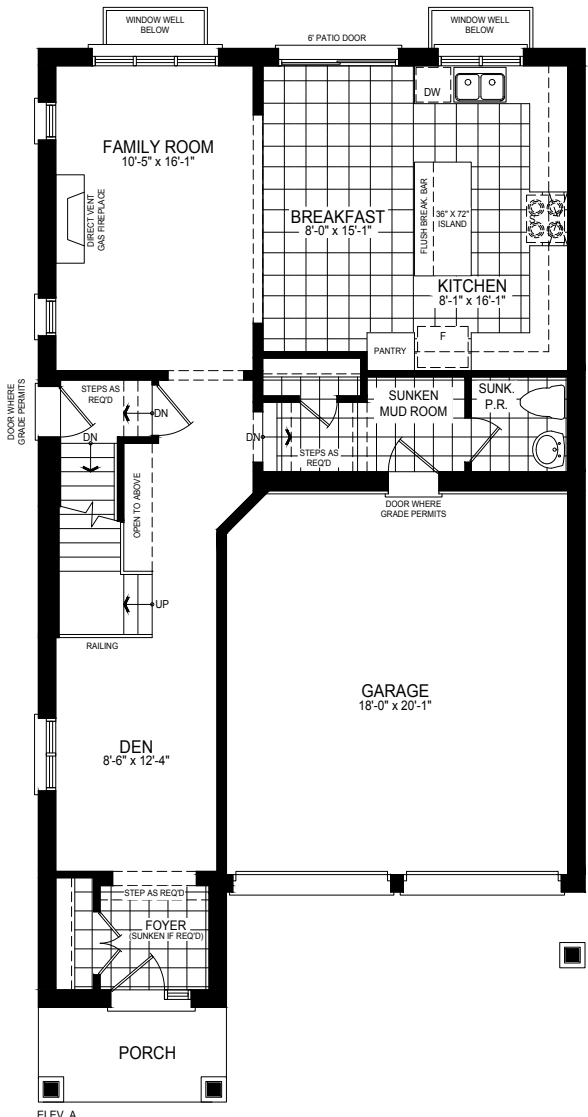
ELEV. C • 2,359 SQ. FT.



ELEV. A • 2,355 SQ. FT.



ELEV. B • 2,337 SQ. FT.



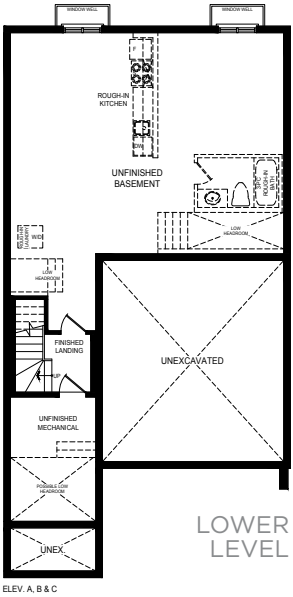
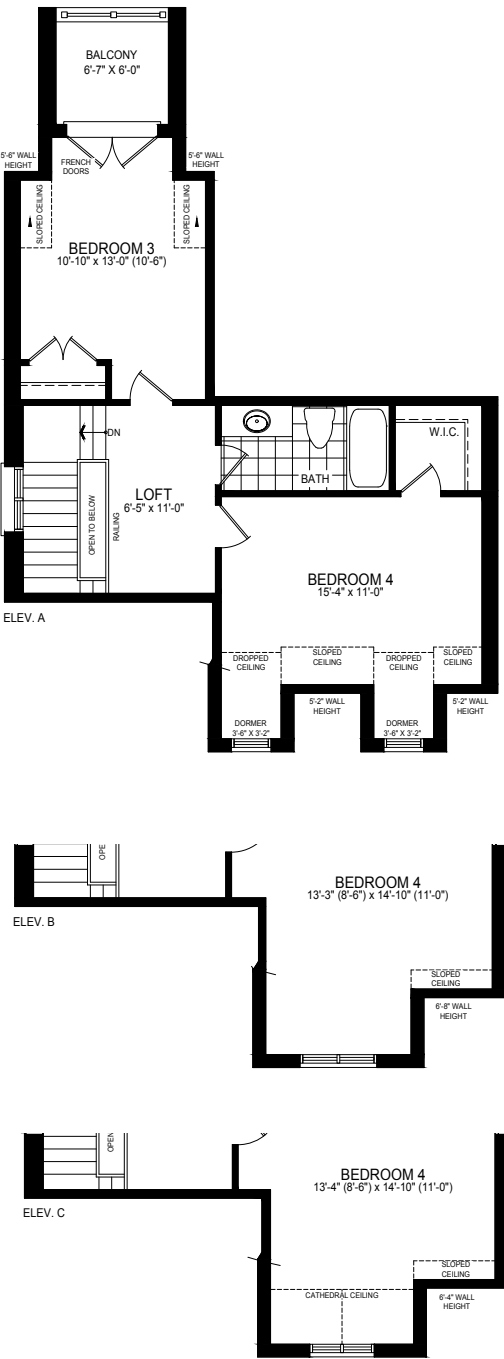
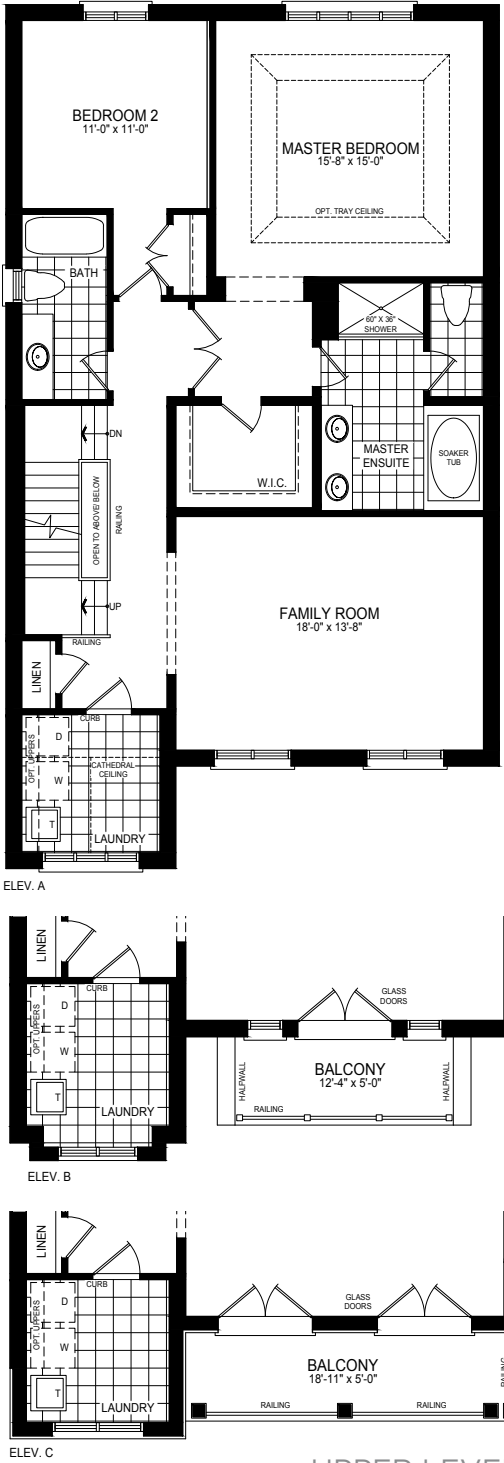
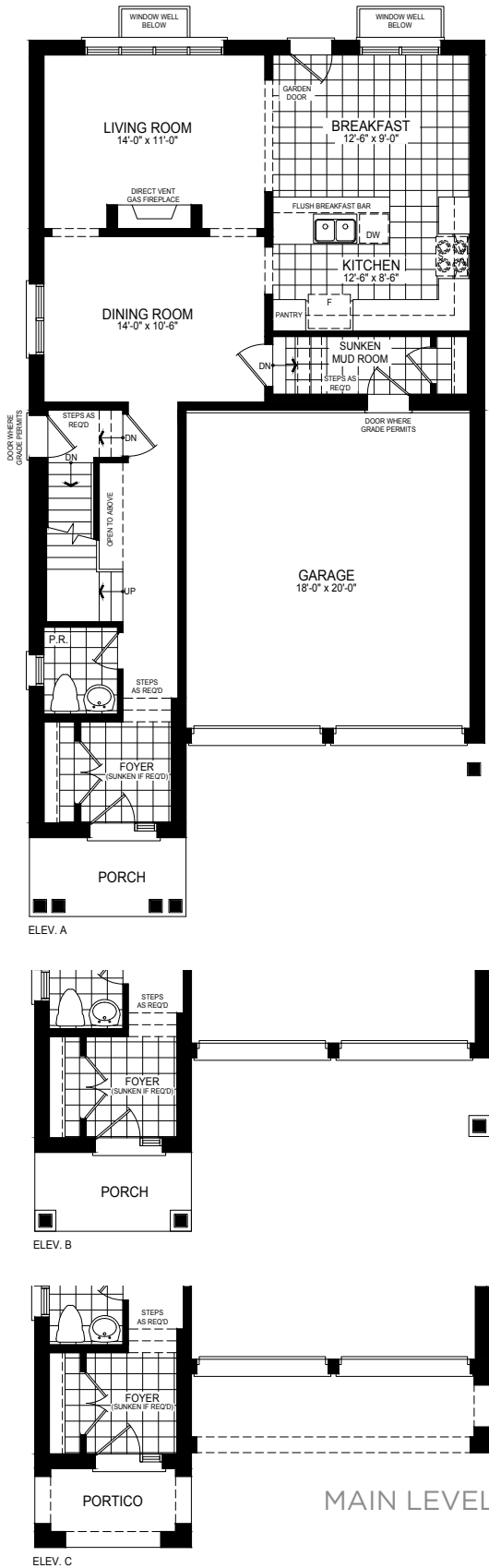
Steps and porches may vary at any exterior or garage entrance ways due to grading variance. Actual usable floor space may vary from stated floor area. All renderings are artist's concept. Dimensions, specifications, architectural and mechanical detailing are approximate and subject to minor modifications. E. & O. E.



# PALMERTON FOUR

35'LOT

INCLUDES 20 SQ. FT. OF OPEN AREA  
INCLUDES 36 SQ.FT. OF FINISHED BASEMENT AREA



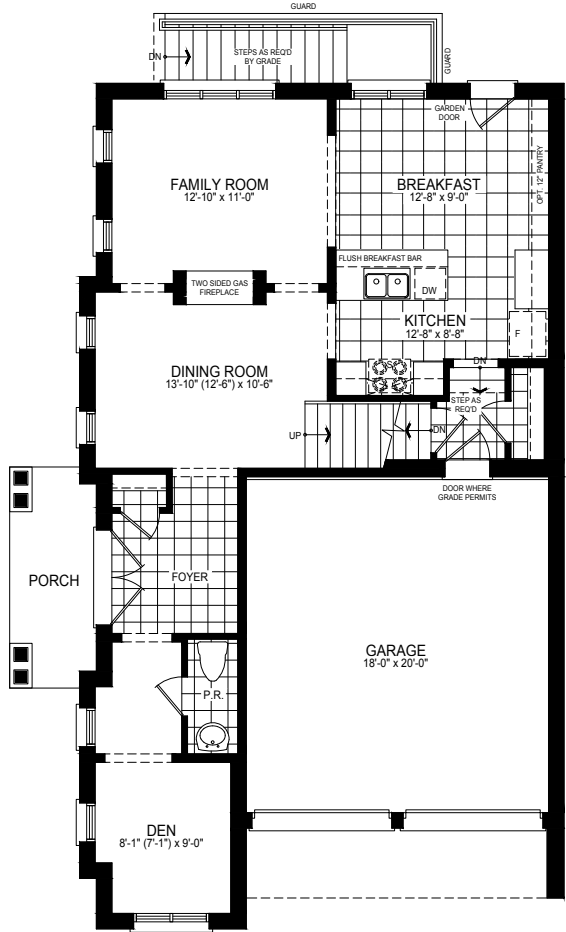
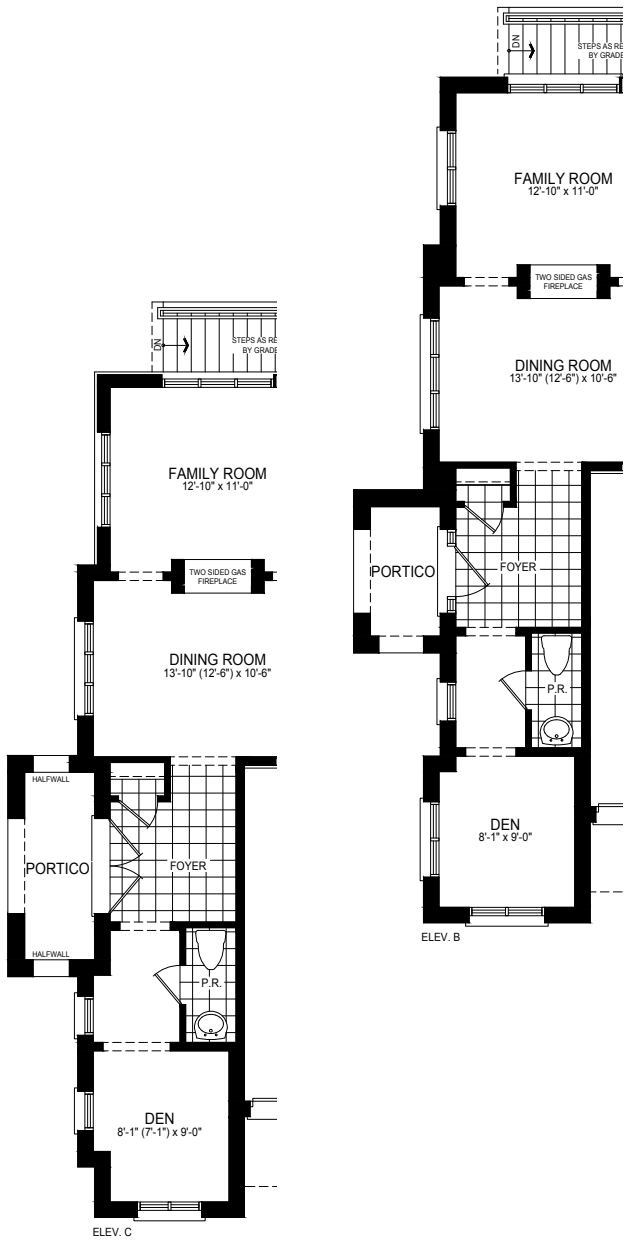
Steps and porches may vary at any exterior or garage entrance ways due to grading variance. Actual usable floor space may vary from stated floor area. All renderings are artist's concept. Dimensions, specifications, architectural and mechanical detailing are approximate and subject to minor modifications. E. & O. E.



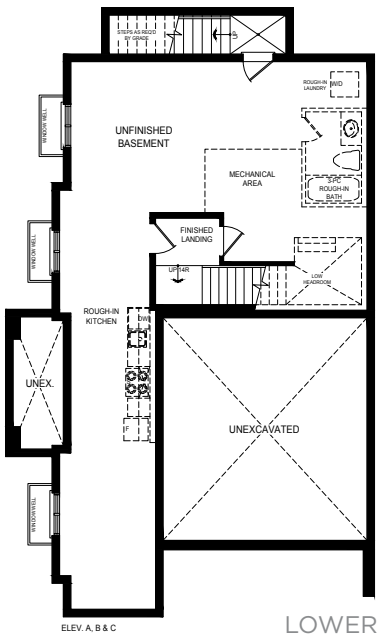
# PALMERTON FIVE

INCLUDES 35 SQ.FT. OF FINISHED BASEMENT AREA

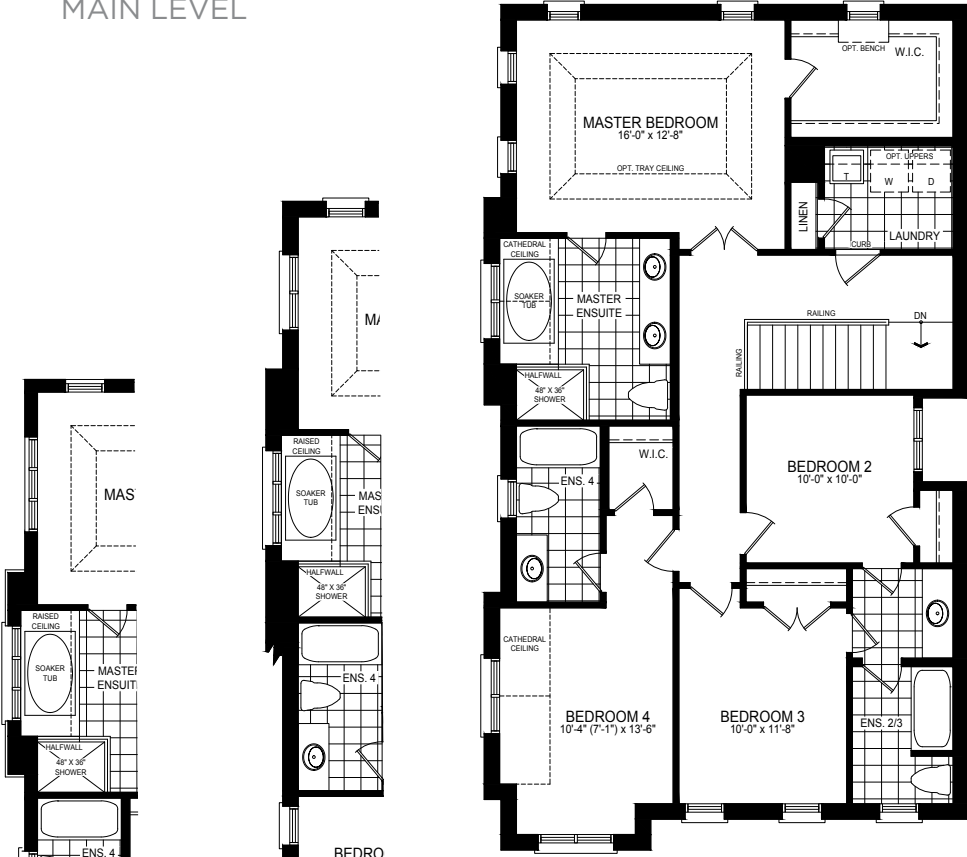
35'LOT



MAIN LEVEL



LOWER LEVEL



UPPER LEVEL

Steps and porches may vary at any exterior or garage entrance ways due to grading variance. Actual usable floor space may vary from stated floor area. All renderings are artist's concept. Dimensions, specifications, architectural and mechanical detailing are approximate and subject to minor modifications. E. & O. E.

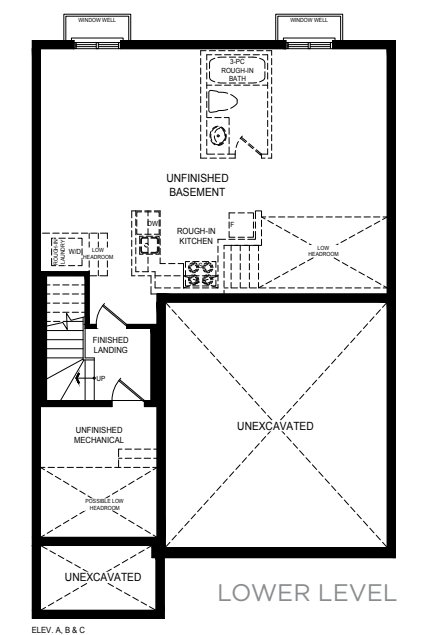
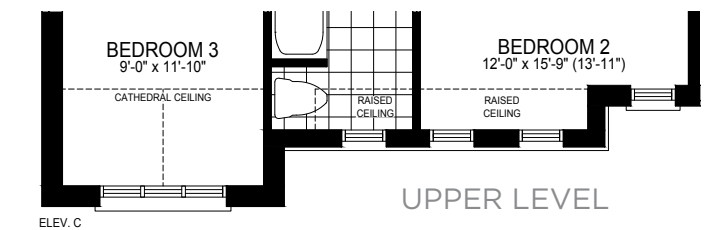
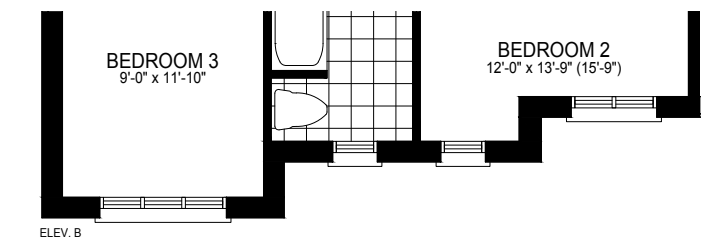
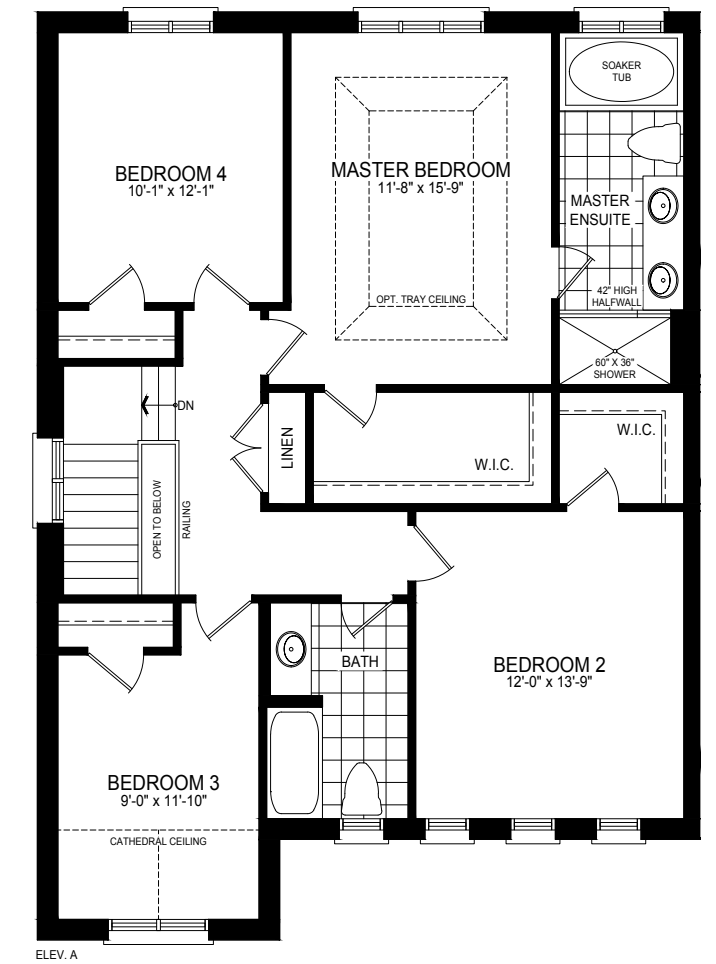
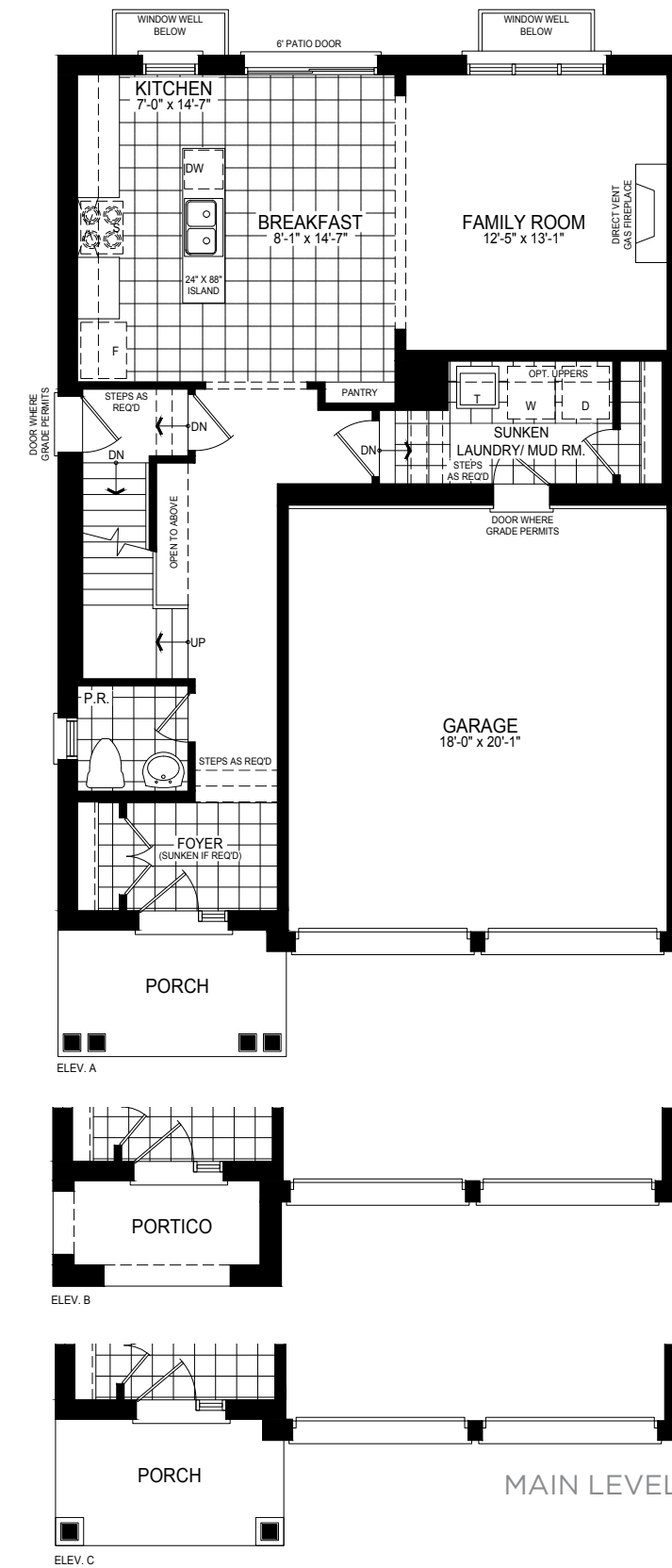


# MONTCLAIRE ONE

INCLUDES 10 SQ.FT. OF OPEN AREA  
INCLUDES 39 SQ.FT. OF FINISHED BASEMENT AREA



36' LOT



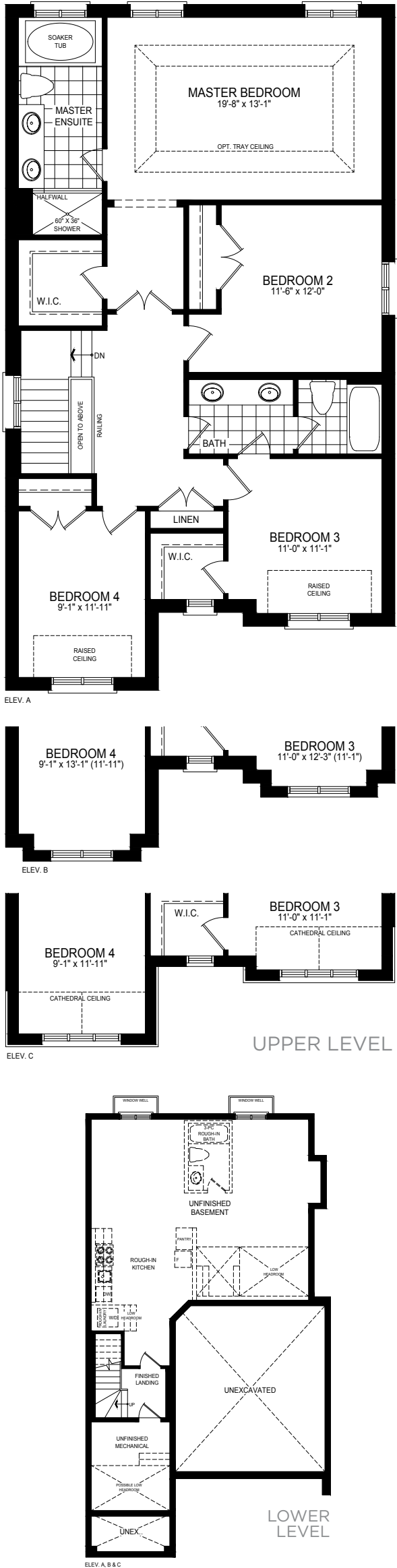
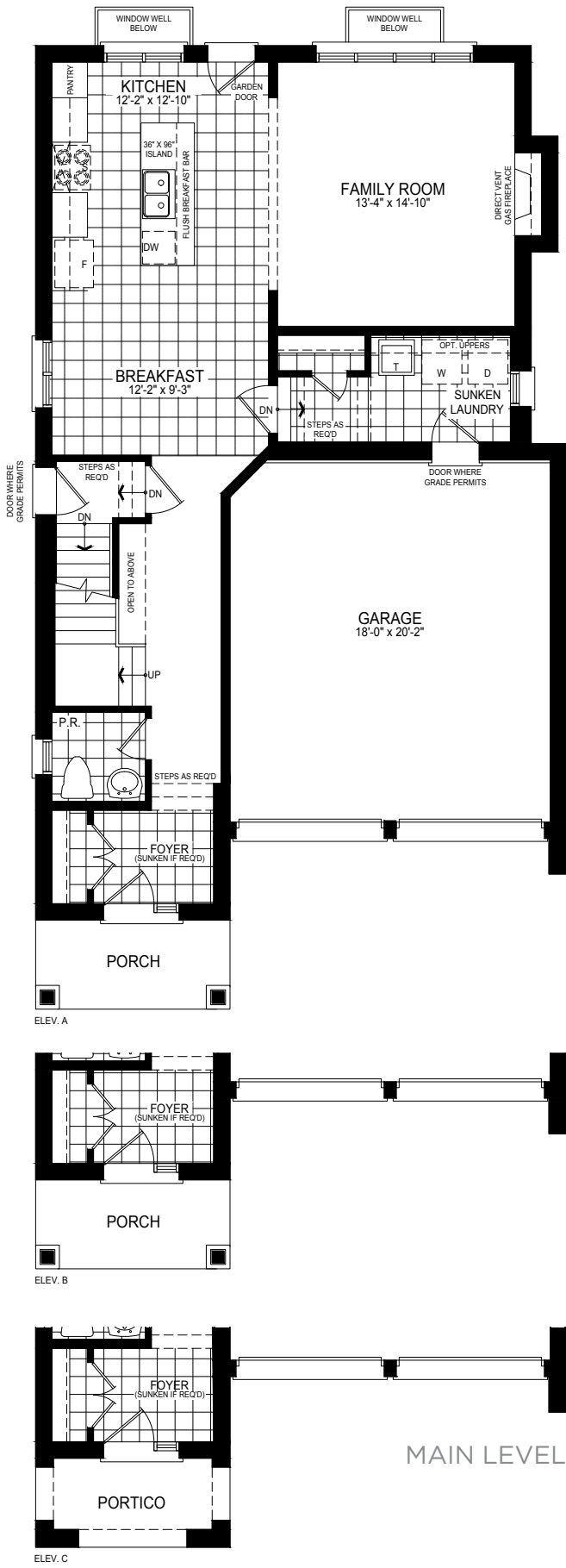
Steps and porches may vary at any exterior or garage entrance ways due to grading variance. Actual usable floor space may vary from stated floor area. All renderings are artist's concept. Dimensions, specifications, architectural and mechanical detailing are approximate and subject to minor modifications. E. & O. E.



MONTCLAIRE TWO

36'LOT

INCLUDES 10 SQ. FT. OF OPEN AREA  
INCLUDES 39 SQ.FT. OF FINISHED BASEMENT AREA



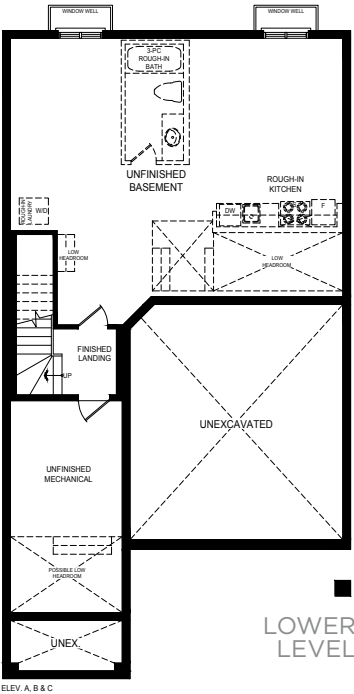
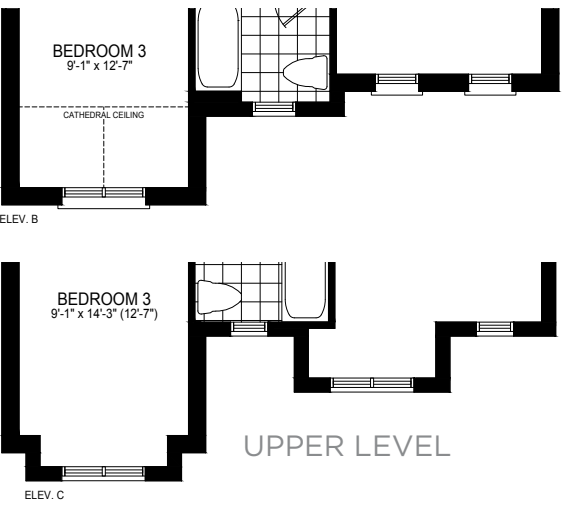
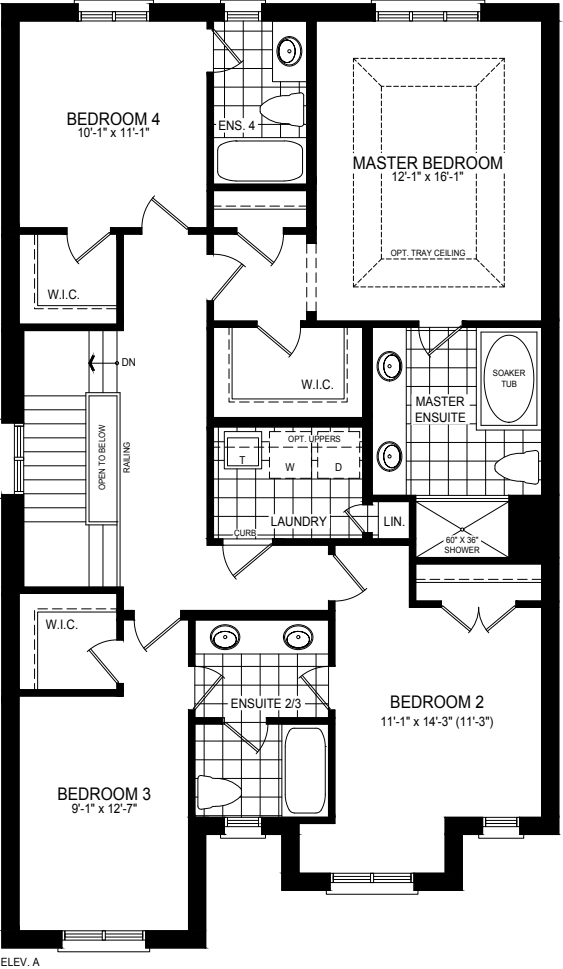
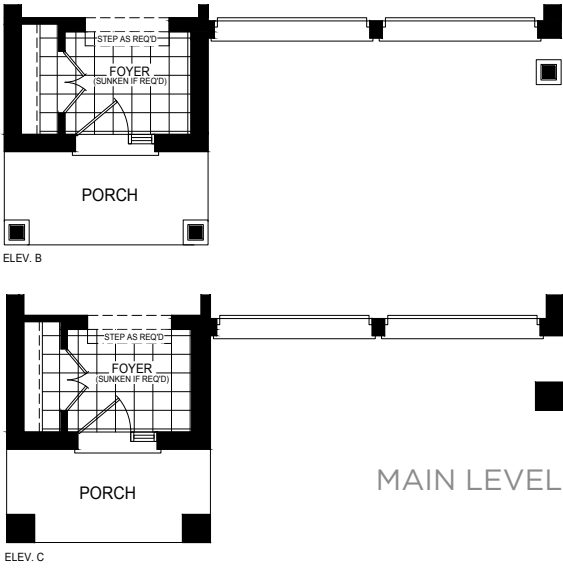
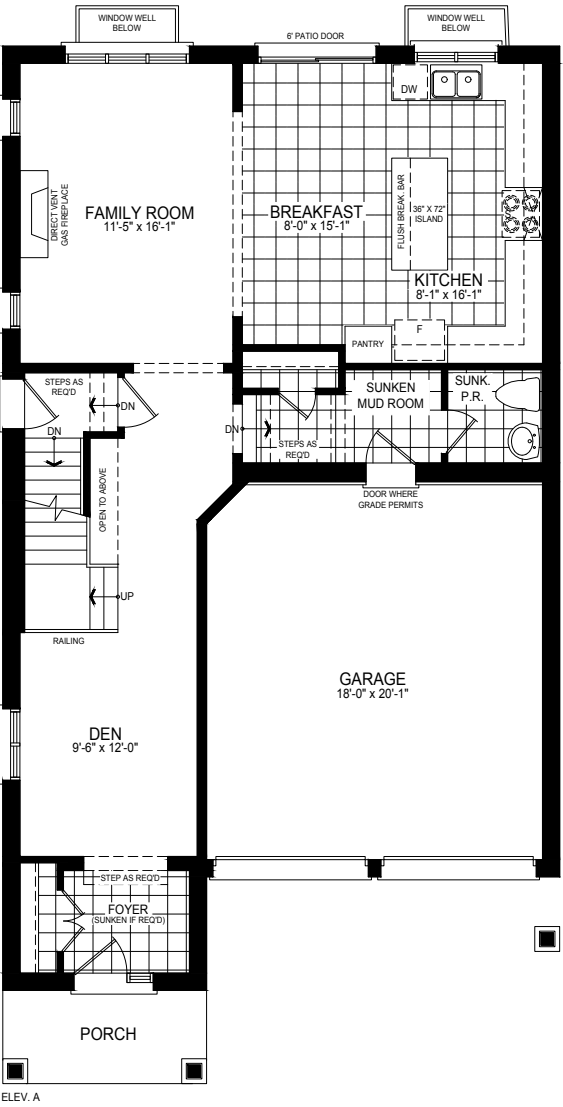
Steps and porches may vary at any exterior or garage entrance ways due to grading variance. Actual usable floor space may vary from stated floor area.  
All renderings are artist's concept. Dimensions, specifications, architectural and mechanical detailing are approximate and subject to minor modifications. E. & O. E.



MONTCLAIRE THREE

36'LOT

INCLUDES 10 SQ. FT. OF OPEN AREA  
INCLUDES 37 SQ.FT. OF FINISHED BASEMENT AREA



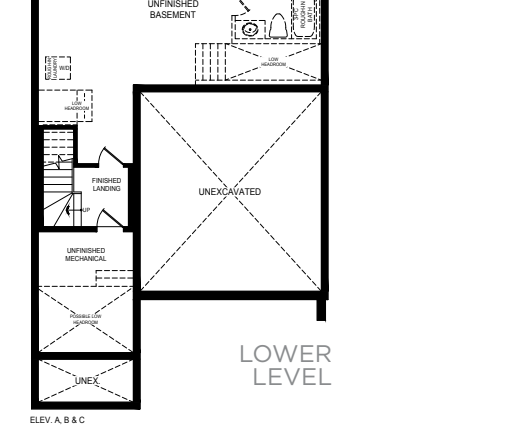
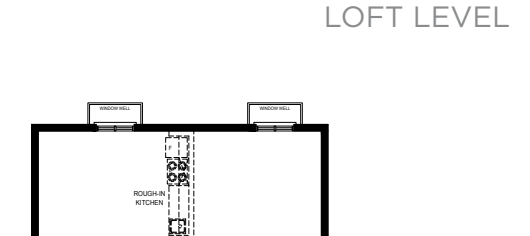
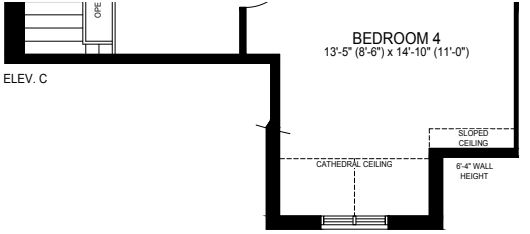
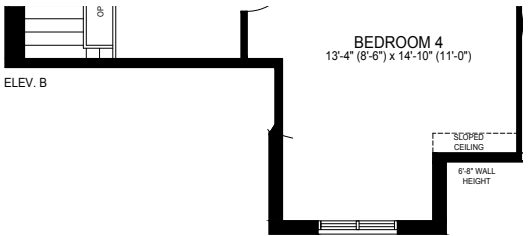
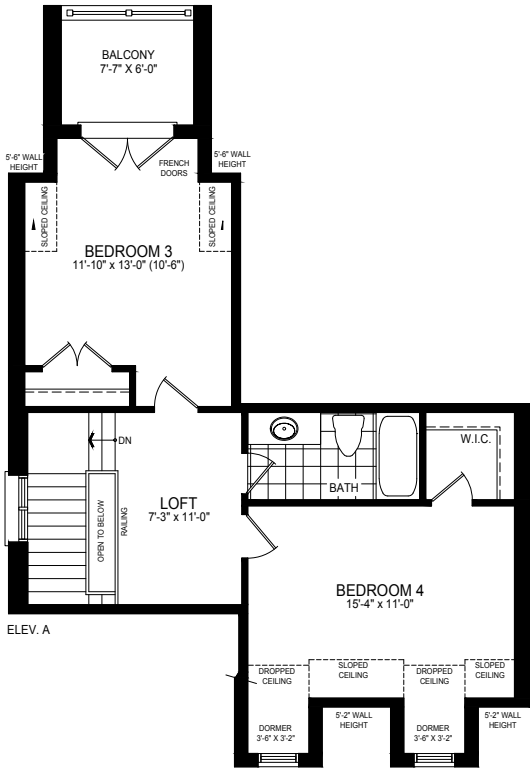
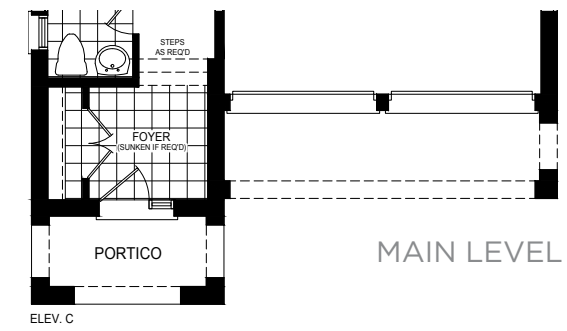
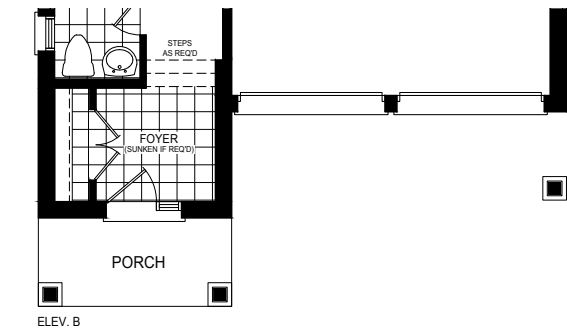
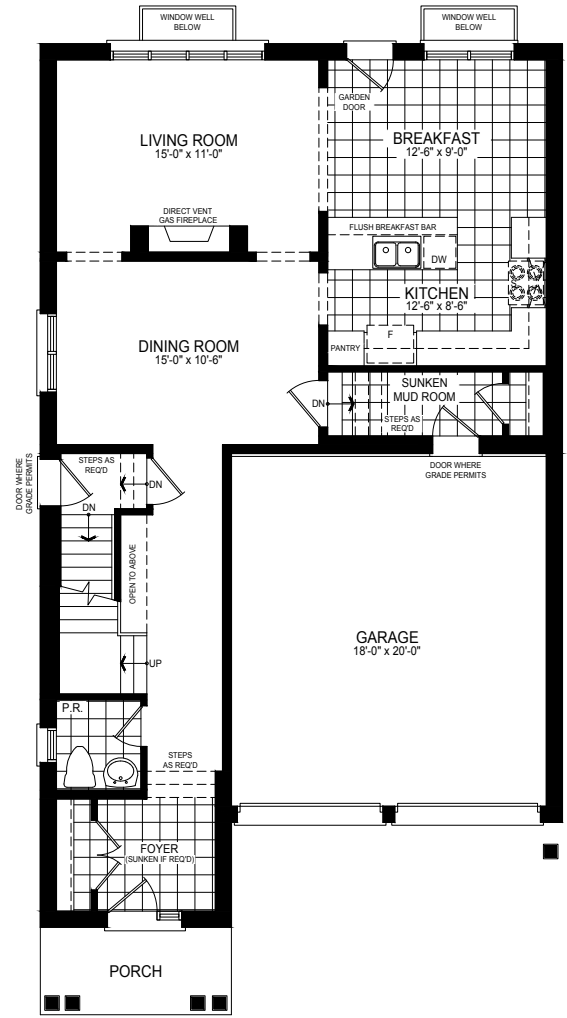
Steps and porches may vary at any exterior or garage entrance ways due to grading variance. Actual usable floor space may vary from stated floor area.  
All renderings are artist's concept. Dimensions, specifications, architectural and mechanical detailing are approximate and subject to minor modifications. E. & O. E.



# MONTCLAIRE FOUR

INCLUDES 20 SQ. FT. OF OPEN AREA  
INCLUDES 39 SQ.FT. OF FINISHED BASEMENT AREA

36'LOT



Steps and porches may vary at any exterior or garage entrance ways due to grading variance. Actual usable floor space may vary from stated floor area. All renderings are artist's concept. Dimensions, specifications, architectural and mechanical detailing are approximate and subject to minor modifications. E. & O. E.

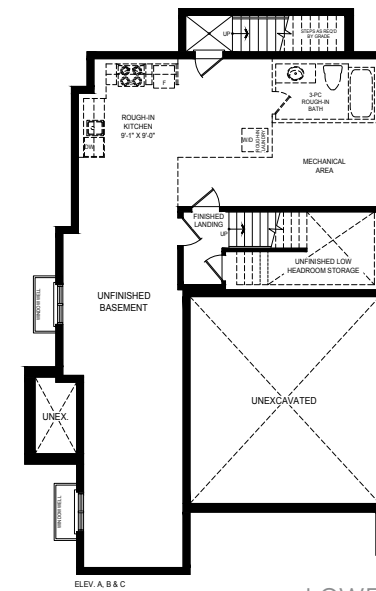
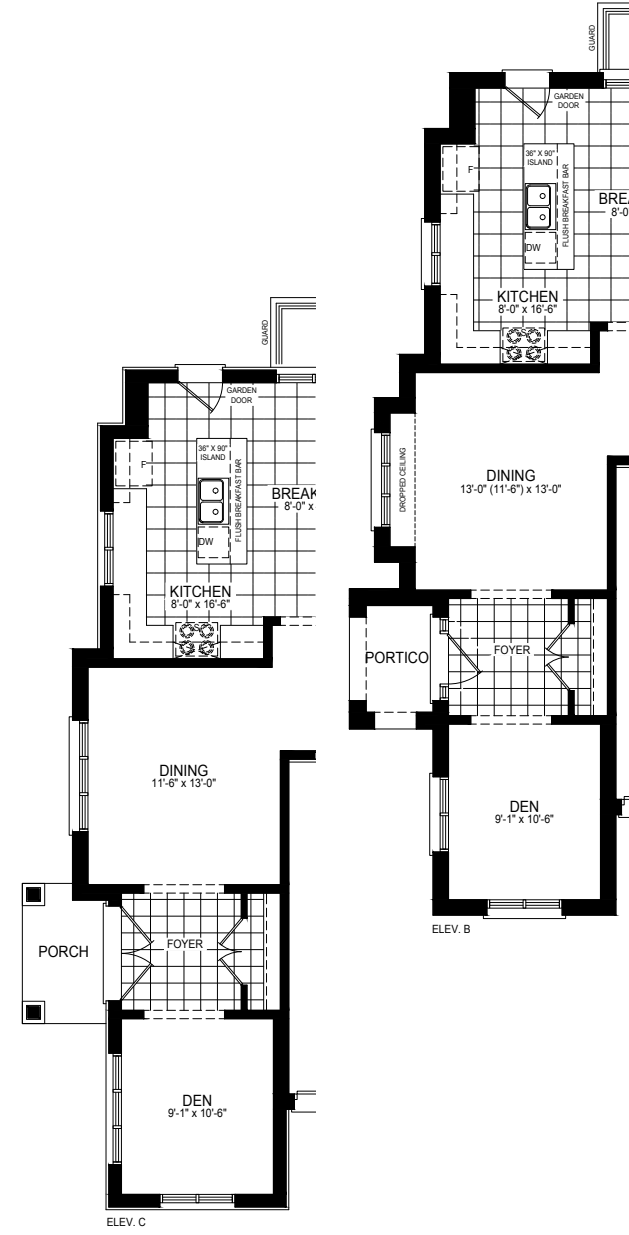


# MONTCLAIRE FIVE

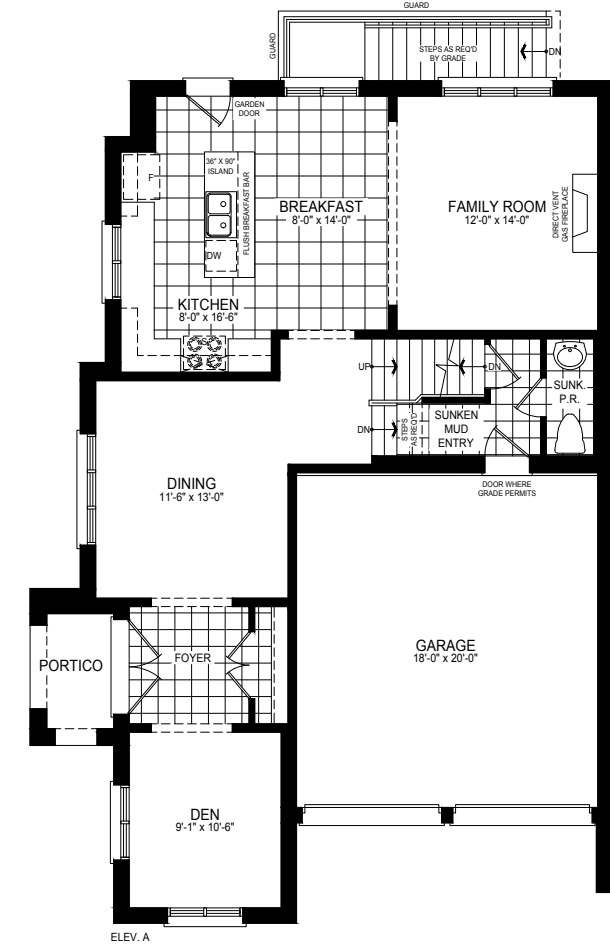
INCLUDES 37 SQ.FT. OF FINISHED BASEMENT AREA



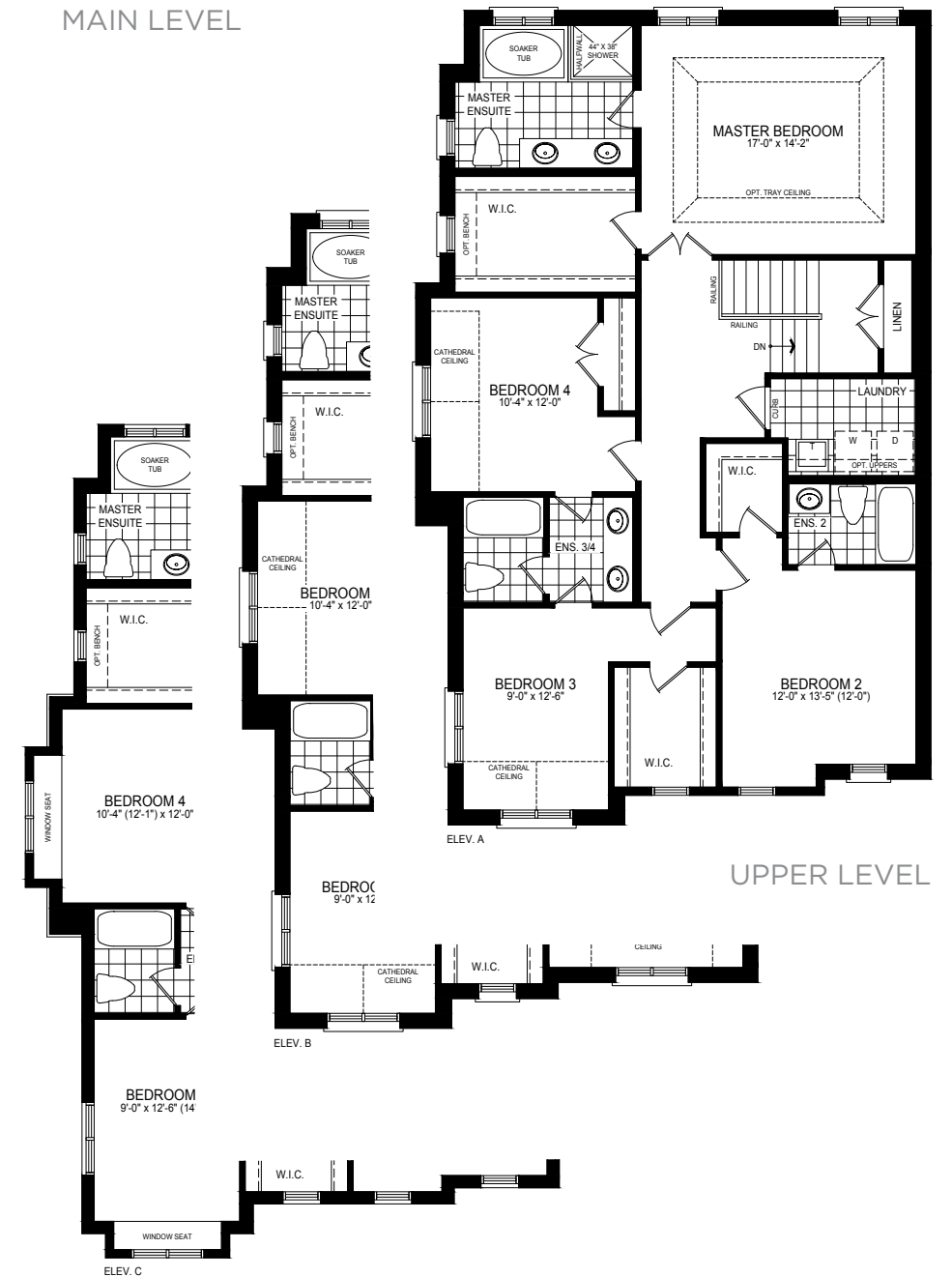
36' LOT



LOWER  
LEVEL



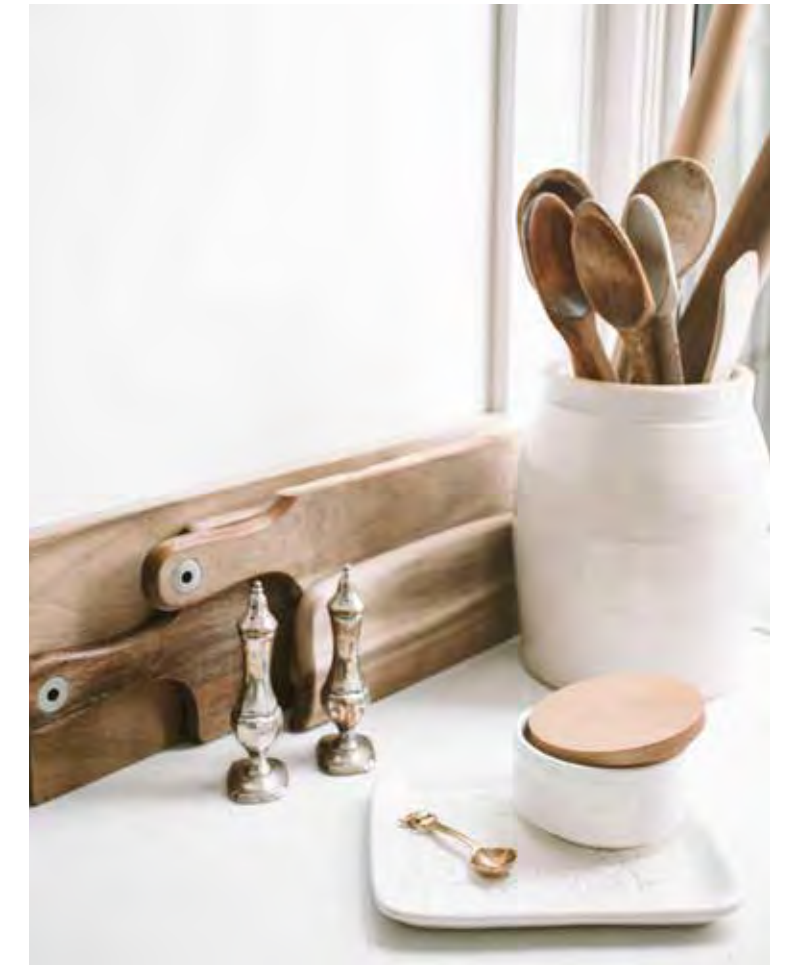
MAIN LEVEL



UPPER LEVEL

Steps and porches may vary at any exterior or garage entrance ways due to grading variance. Actual usable floor space may vary from stated floor area. All renderings are artist's concept. Dimensions, specifications, architectural and mechanical detailing are approximate and subject to minor modifications. E. & O. E.





#### THE DETAILS

## Design Studio

Upon selecting your home at Reesor Ridge, you will have full access to our Design Studio, where our experts are prepared to assist you in creating your dream home. The possibilities are endless, and every home is a blank canvas waiting to be painted with your desires and our expertise.



# BUILT TO TREASURE



## AWARD-WINNING HOME BUILDER

Treasure Hill is the recipient of multiple BILD Awards including twice winning Low-Rise Project of the Year. Dedication to quality craftsmanship, attention to detail, and listening to purchasers' wants and needs have helped to elevate our reputation as one of the GTA's most dependable and sought-after new home builders.

## TREASURE HILL





# DISCOVER LIVING

Treasurehill.com



