

TREASUREHILL.COM

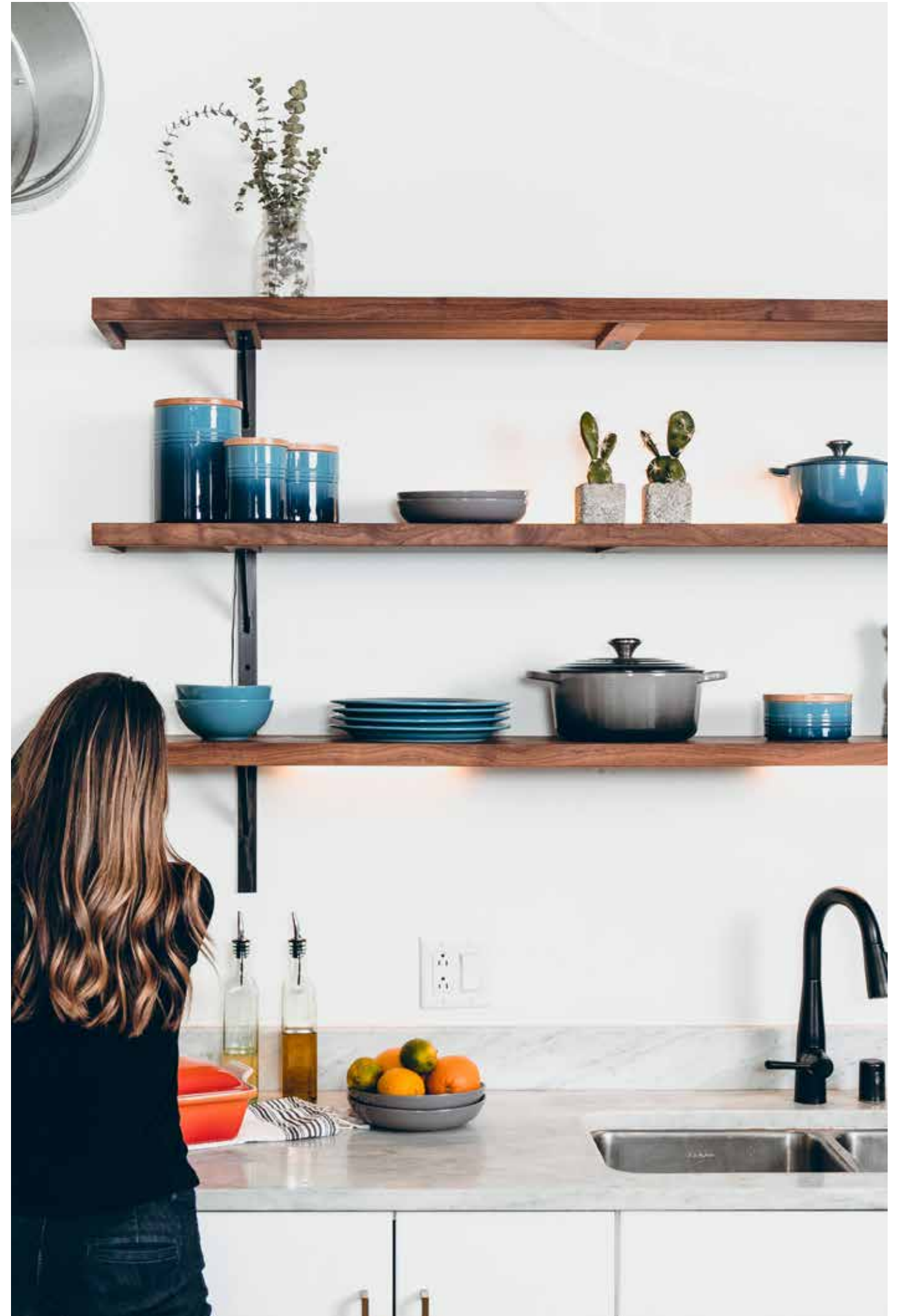
EVOKE

MODERN TOWNS



# Feel Right at Home

Evoke Modern Towns will make you feel like you are exactly where you were meant to be. Coming soon to Vaughan at Dufferin Street and Rutherford Road, Treasure Hill's newest townhome community is sure to evoke a sense of excitement and comfort.





TREASURE HILL



ARTIST CONCEPT

MODERN TOWNS

Experience elevated design at Evoke Modern Towns. Live in a stunning townhome with elegant features and excellently crafted finishes, highlighted by an urban flair perfected by Treasure Hill. Through close attention to detail, not a single element has been left out of the design process at Evoke.

# Contemporary Design





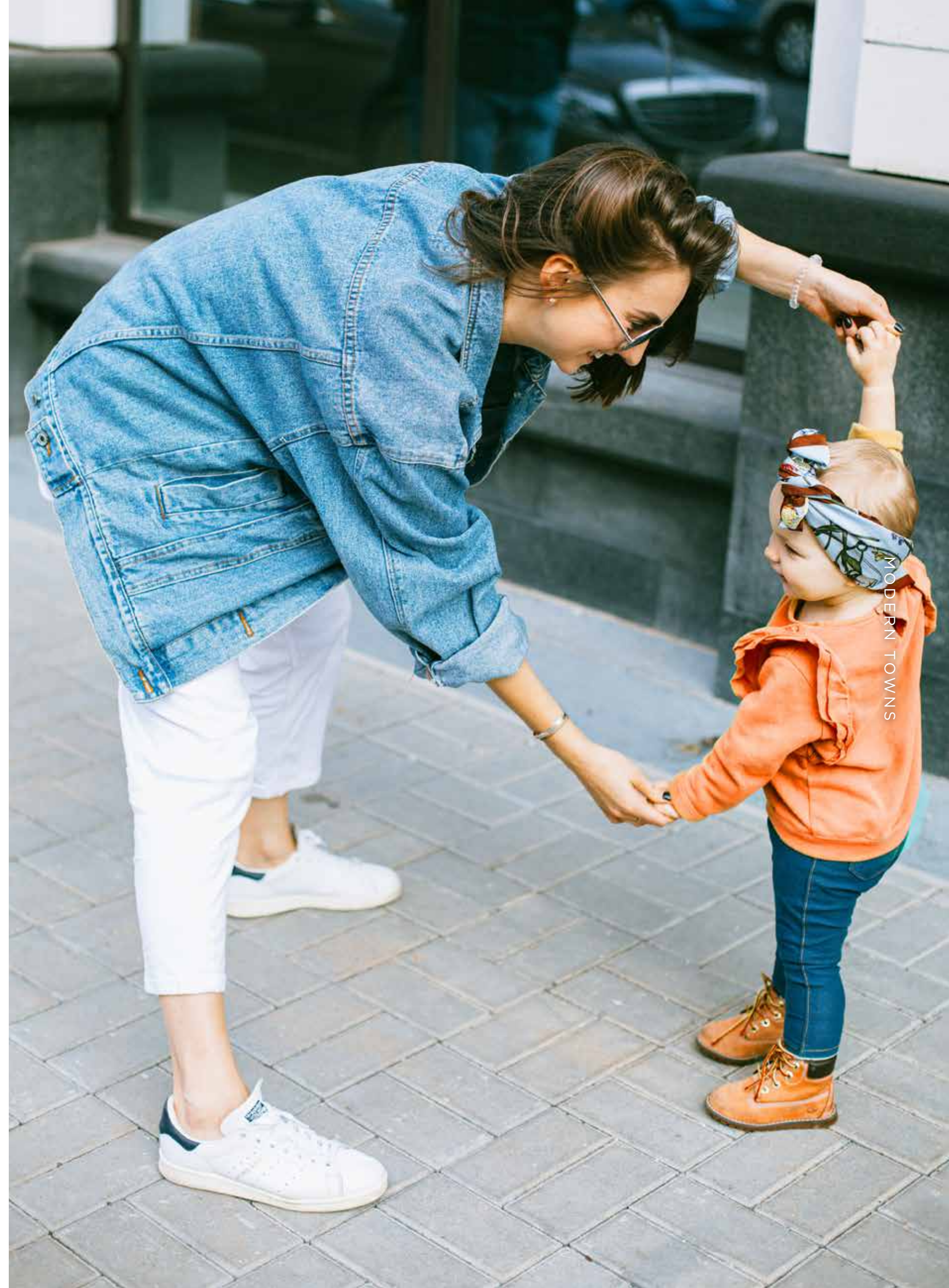
# Experience Elegant Living

The design is in the details, and that philosophy has been at the forefront through the entire process at Evoke Modern Towns. Each and every townhome has been created to evoke a feeling of joy, solace and luxury.



# Convenience & Comfort

Community is what makes a neighbourhood feel like home.  
With its location in Vaughan, every homeowner at Evoke has  
access to the ideal lifestyle which a flourishing city provides.



# Amenities Within Reach

Evoke Modern Towns is surrounded by all the amenities you could want and need including shops, parks, restaurants, schools and more. Plus, highways 400 and 407 are just a short drive a way to ensure that you are connected to the rest of the GTA.



## SCHOOLS

1. Nellie McClung Public School
2. Bialik Hebrew Day School
3. Carrville Mills Public School
4. Stephen Lewis Secondary School
5. Thornhill Woods Public School
6. Forest Run Public School
7. Dr. Roberta Bondar Public School
8. Maple High School

## RECREATION

1. Eagles Nest Golf Club
2. Canada's Wonderland
3. Anytime Fitness
4. The Sports Village
5. Maple Community Centre
6. YMCA
7. Making Waves Swim School
8. Orangetheory Fitness
9. Richmond Hill Country Club

## HEALTH & WELLNESS

1. LA Fitness
2. Sobey's Pharmacy
3. Shoppers Drug Mart

## DINING

1. Sorelle & Co. Bakery
2. Freshii
3. Duff's Famous Wings
4. Mr. Greek
5. Tim Hortons

## PARKS

1. Mackenzie Glen District Park
2. Maple Reservoir
3. Melville Park
4. Jack Pine Park
5. Maple Airport Park
6. Frank Robson Park
7. Naylon Parkette
8. Civic Park
9. Marc Santi Park

6. Antonio's Pizzeria & Panini
7. Tim Hortons/Wendy's
8. Burger King
9. Popeyes Louisiana Kitchen
10. Ristorante Don Vincenzo

## SHOPPING

1. Highland Farms
2. Beer Store
3. LCBO
4. Lowe's
5. Longo's
6. Sobey's
7. No Frills
8. Vaughan Mills Mall

11. Starbucks
12. St. Louis Bar & Grill
13. Starbucks
14. Farro Ristorante





Treat Yourself  
**OR**  
Enjoy it All





ARTIST CONCEPT

In The Heart of **Vaughan**





Situated between two major shopping destinations. Vaughan Mills is the largest shopping mall in York Region and one of the largest in the country with over 250 retailers. Hillcrest Mall is home to over 135 shops, services and restaurants.

## Shop 'Til You Drop

When you live at Evoke Modern Towns, you won't need to go far to experience the ultimate shopping destinations. Not only do you have access to some of the top malls in the nation, you are also situated nearby numerous outdoor plazas with shopping and dining options.



## Dining & Entertainment

Live life the way you're meant to at Evoke Modern Towns. Surround yourself with exciting entertainment destinations like Canada's Wonderland, Legoland and Reptilia Zoo, as well as a number of delicious restaurants and excellent golf courses.



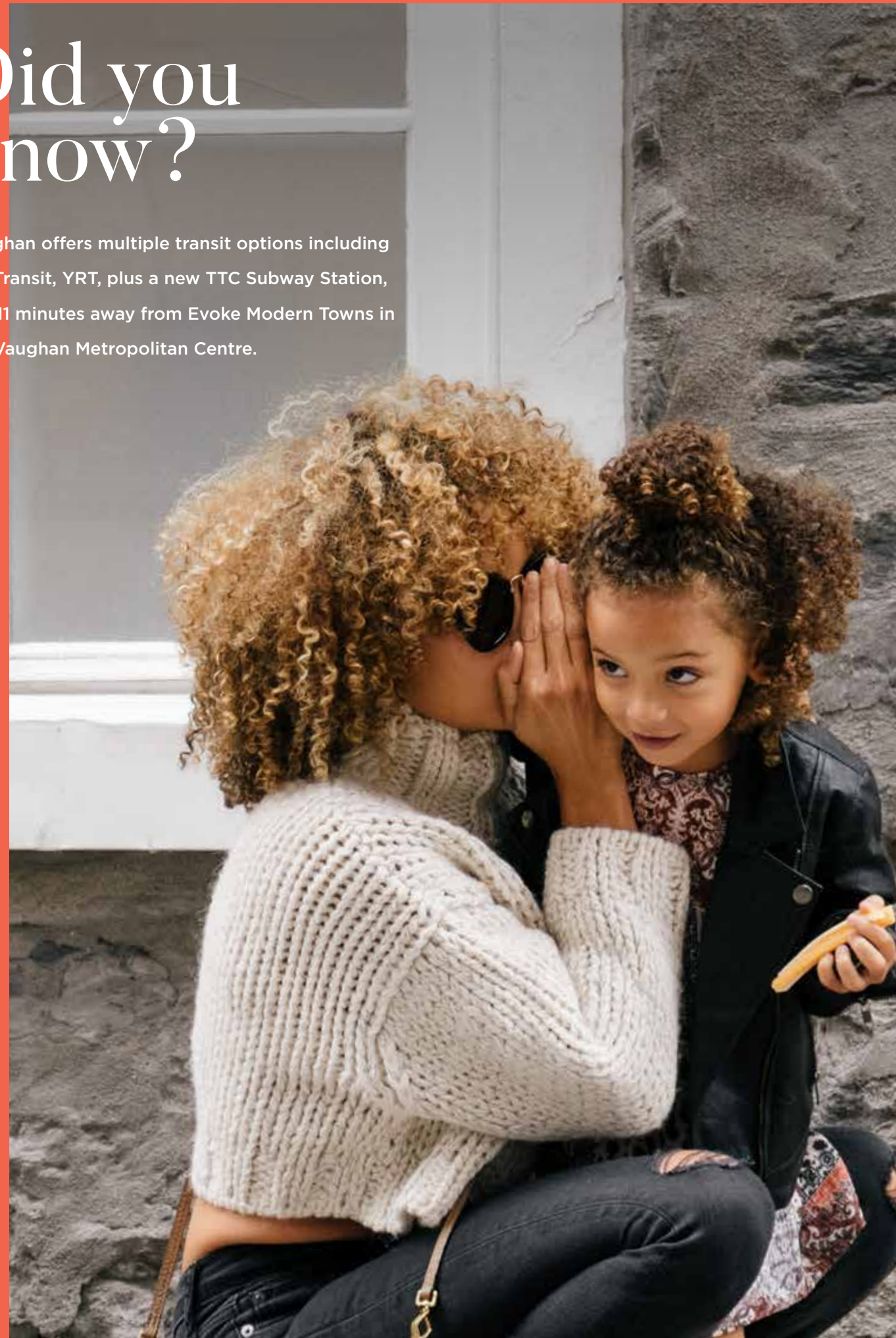
The renowned Eagle's Nest Golf Club is only a few minutes away, offering a world-class golfing experience and gourmet dining.



# Did you know?

Vaughan offers multiple transit options including GO Transit, YRT, plus a new TTC Subway Station, just 11 minutes away from Evoke Modern Towns in the Vaughan Metropolitan Centre.

TREASURE HILL



## Go Where You Please

The rest of the Greater Toronto Area is at your fingertips with quick access to major highways along with public transit including Maple GO Station, Rutherford GO Station, various bus stops, and the VMC Subway Station.

MODERN TOWNS



# Explore the Great **Outdoors**

Evoke Modern Towns itself backs onto Marc Santi Park, offering a green escape for homeowners. Enjoy ample outdoor space across Vaughan when you live at Evoke Modern Towns. Not only are you backing onto a serene greenspace, but the city is also yours to explore, with many parks just minutes from your doorstep including North Thornhill District Park, Sugarbush Heritage Park, Maple Nature Reserve and more.



## Did you know?

The City of Vaughan is home to over  
800 hectares of turf, over 230 sports fields  
and over 200 playgrounds.



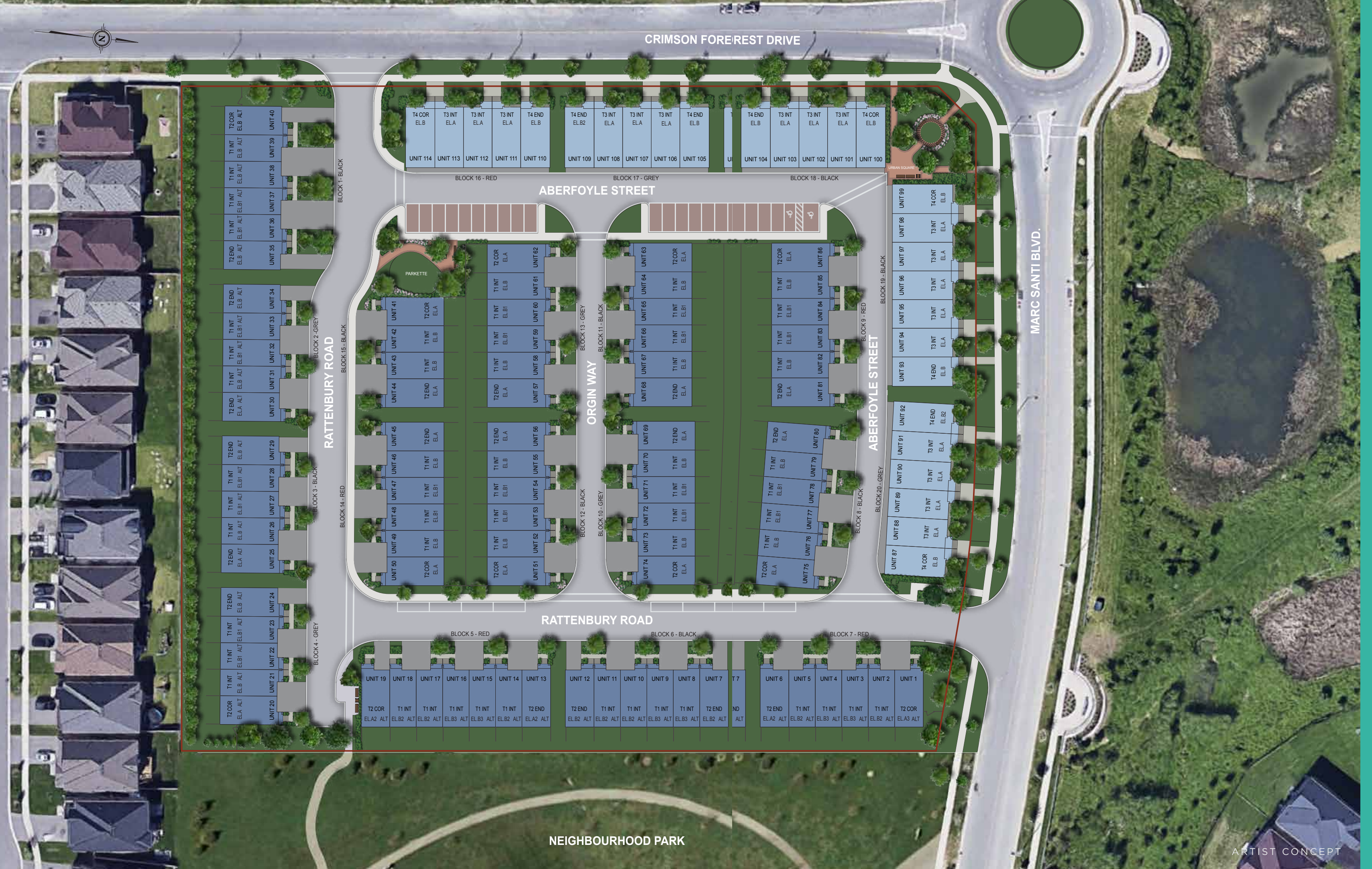
# Did you know?


According to the Fraser Institute School Rankings, 40% of schools in Vaughan rank above 7.6, putting them in the top threshold.


## Quality Education

When you live at Evoke Modern Towns, you can rest easy knowing that quality education is within reach. Not only are there endless top-rated schools in the vicinity, there are also many private schools available to enroll in, including Delano Academy and Villanova College. An elite post-secondary education is also accessible, with York University and Seneca College under 15 minutes away. For all stages of life, a life at Evoke Modern Towns ensures that you have the education you deserve.





 SINGLE CAR GARAGE  
18'-0" TOWNS

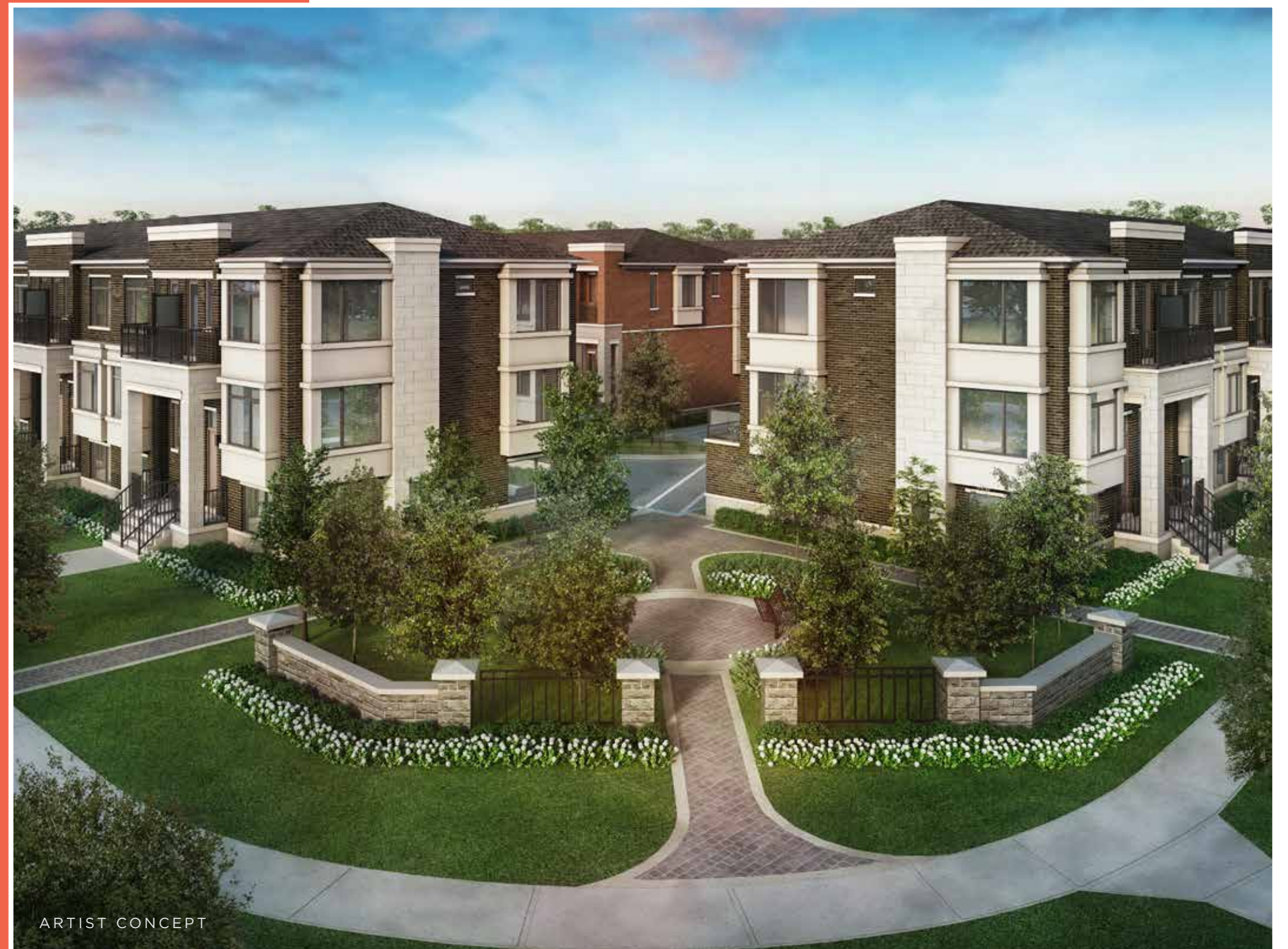
 DOUBLE CAR GARAGE  
19'-8" TOWNS

Map and site plan not to scale. Specifications are subject to change without notice.  
Rendering and landscaping is artist's concept and for general information only. E. & O.E.

# Modern Town Collection



# Home Awaits You



ARTIST CONCEPT

MODERN TOWNS

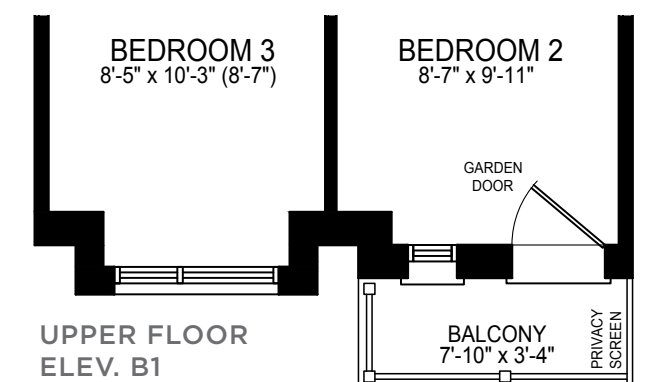
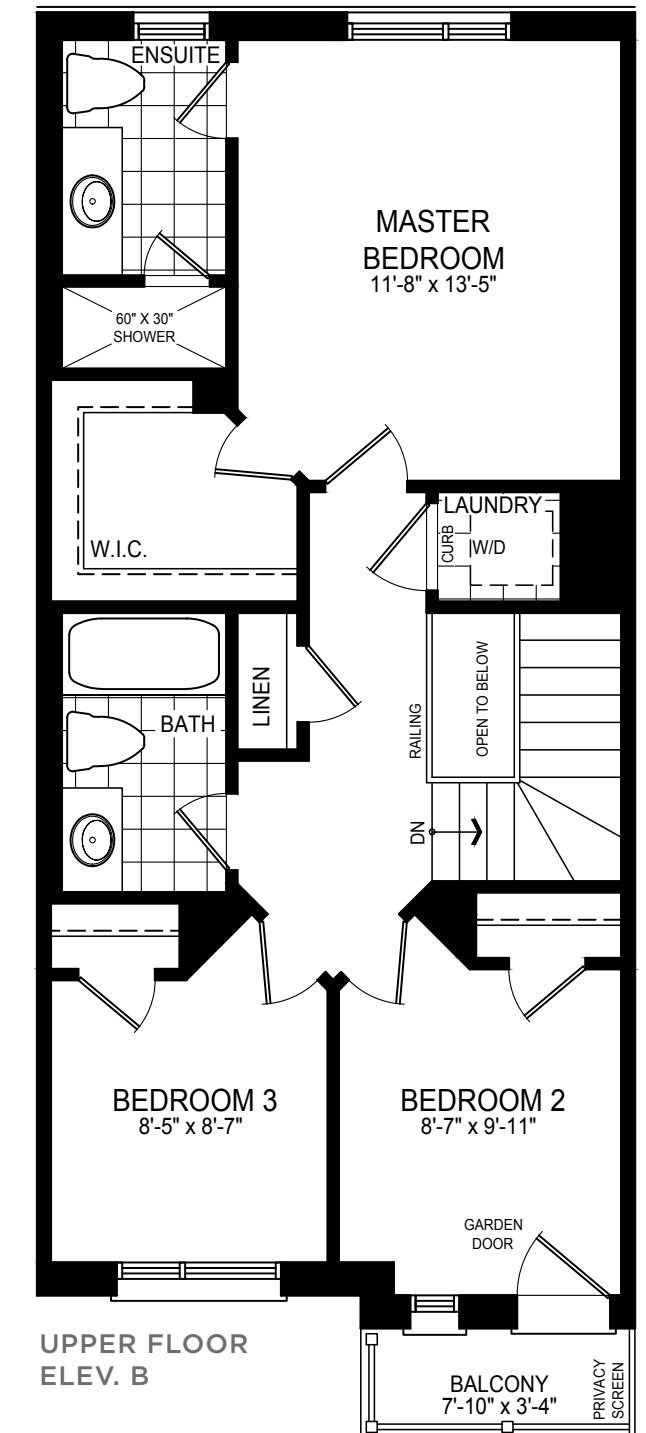
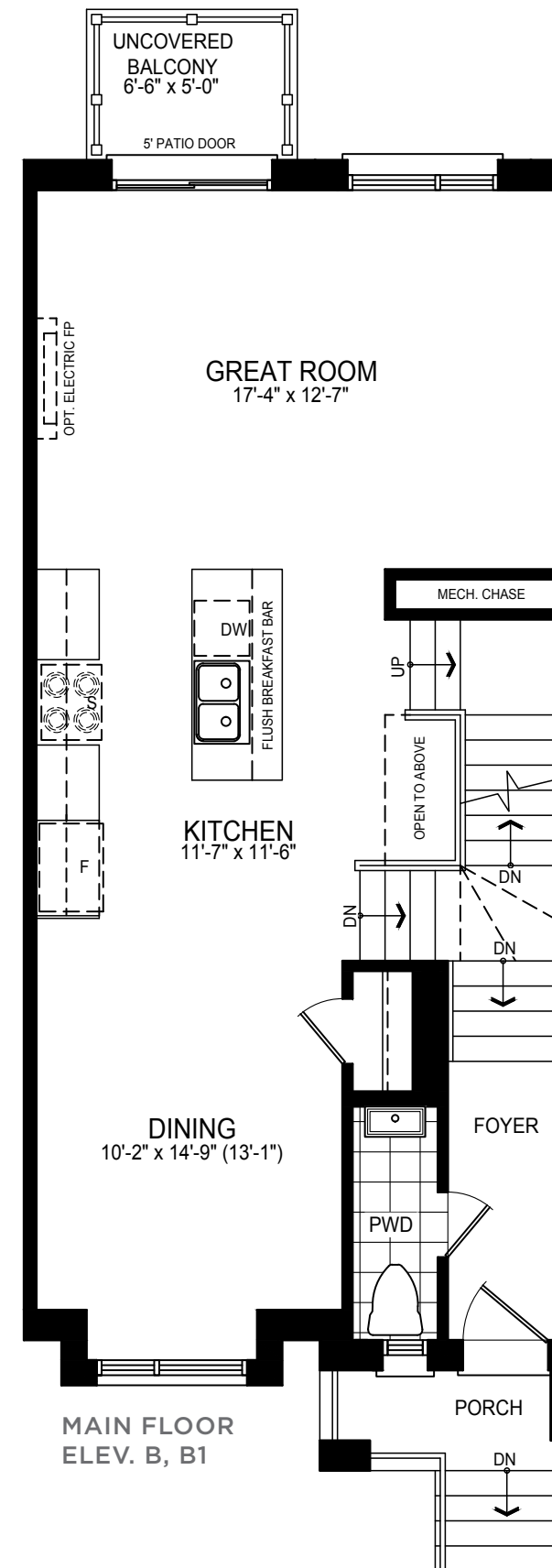
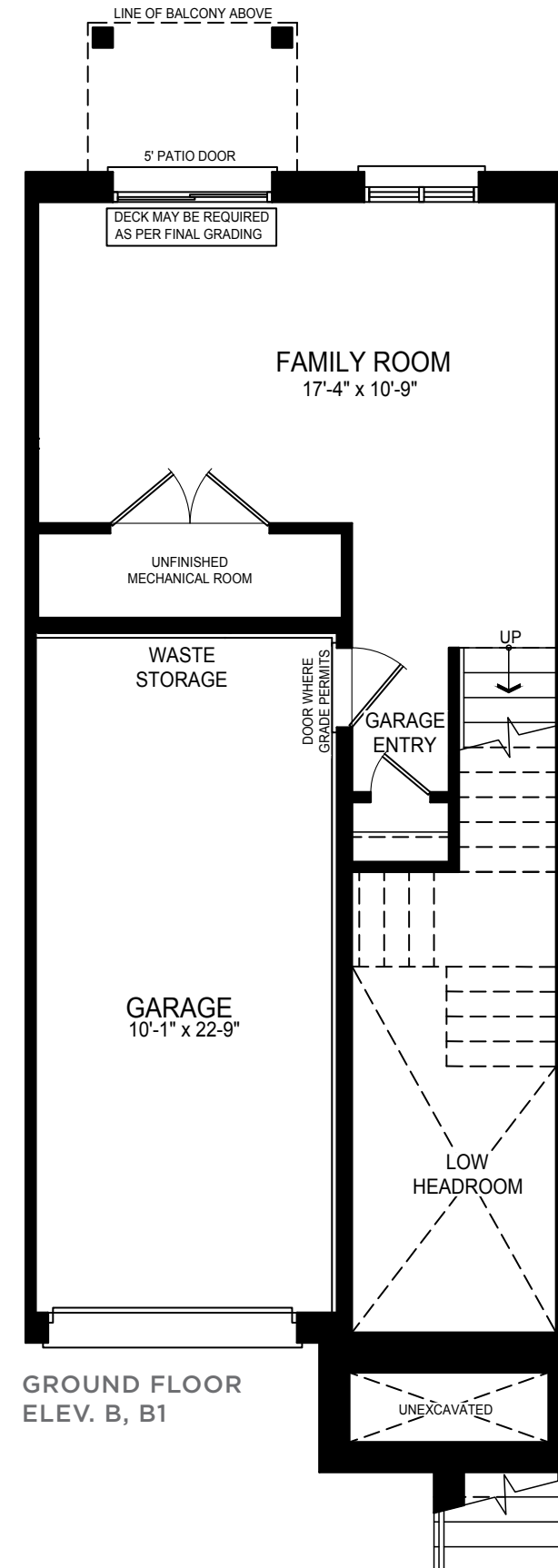


# T 1

ELEV. B • 1,730 SQ.FT.



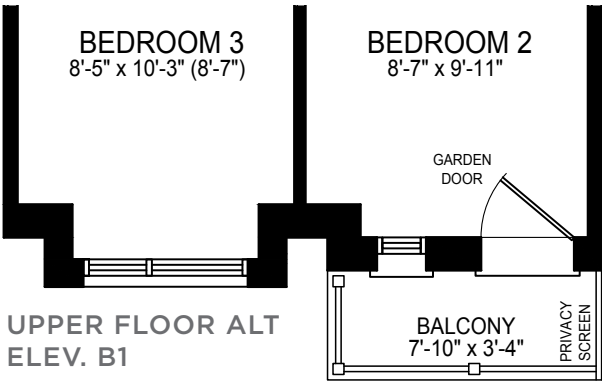
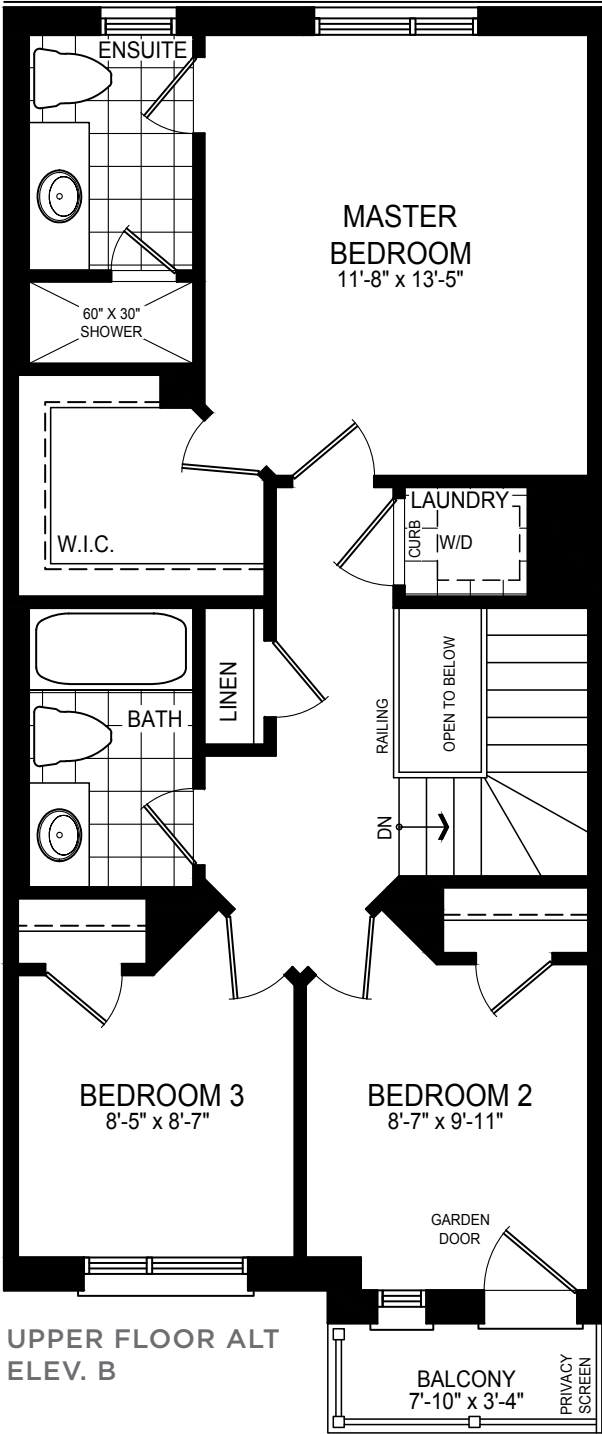
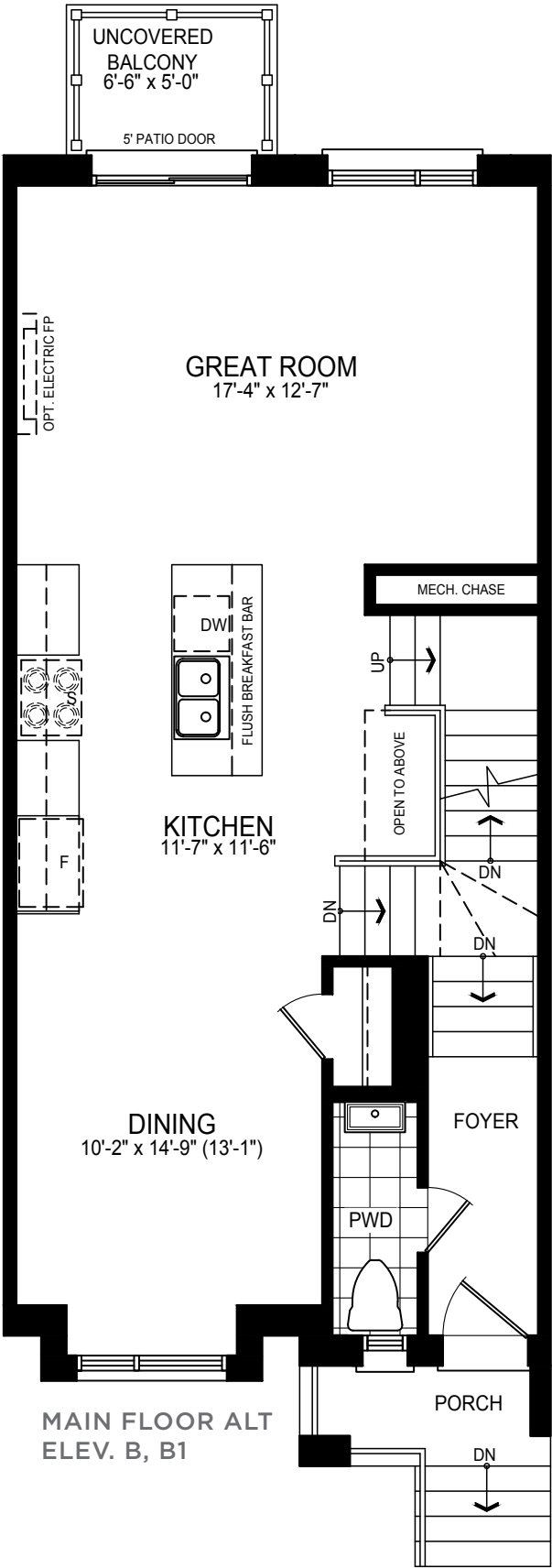
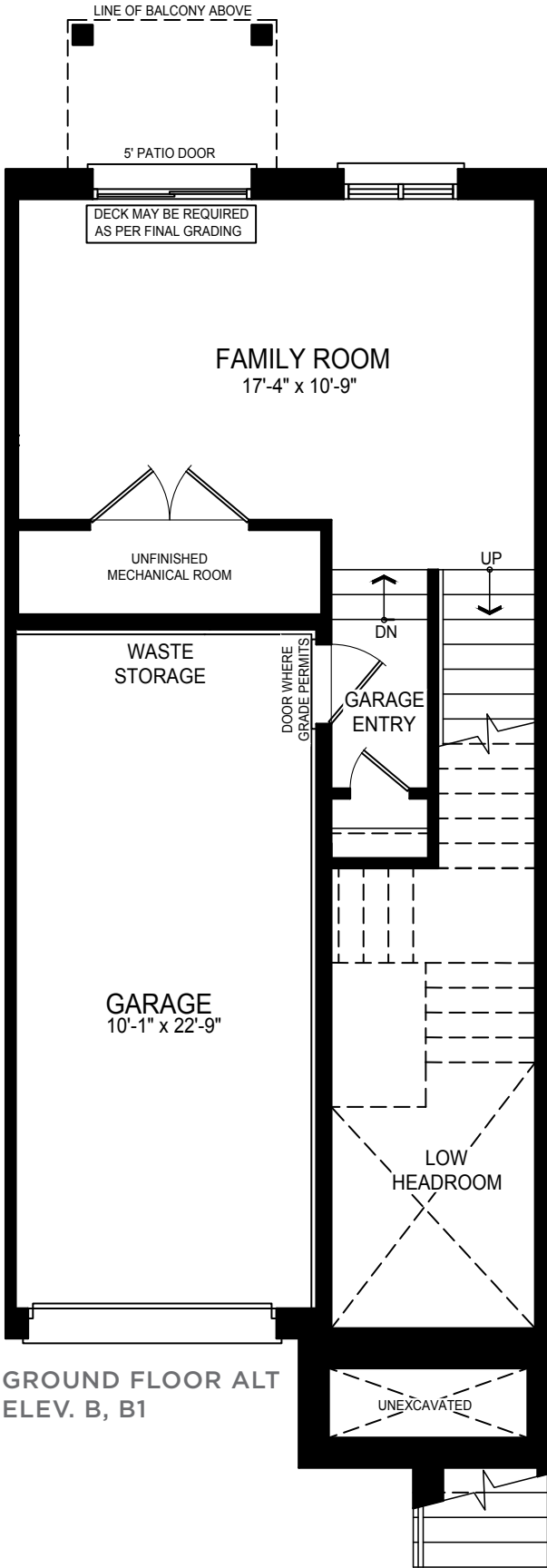
ELEV. B1 • 1,741 SQ.FT.



NOTE: Orientation of home may be reversed and purchaser agrees to accept the same. Number of risers may vary at any exterior entranceways due to grading variance. Actual usable floor space may vary from stated floor area. All renderings are artist's impression. Dimensions, specifications, architectural and mechanical detailing are subject to minor modifications. Unit setback and roofline may vary due to siting. E. & O. E.



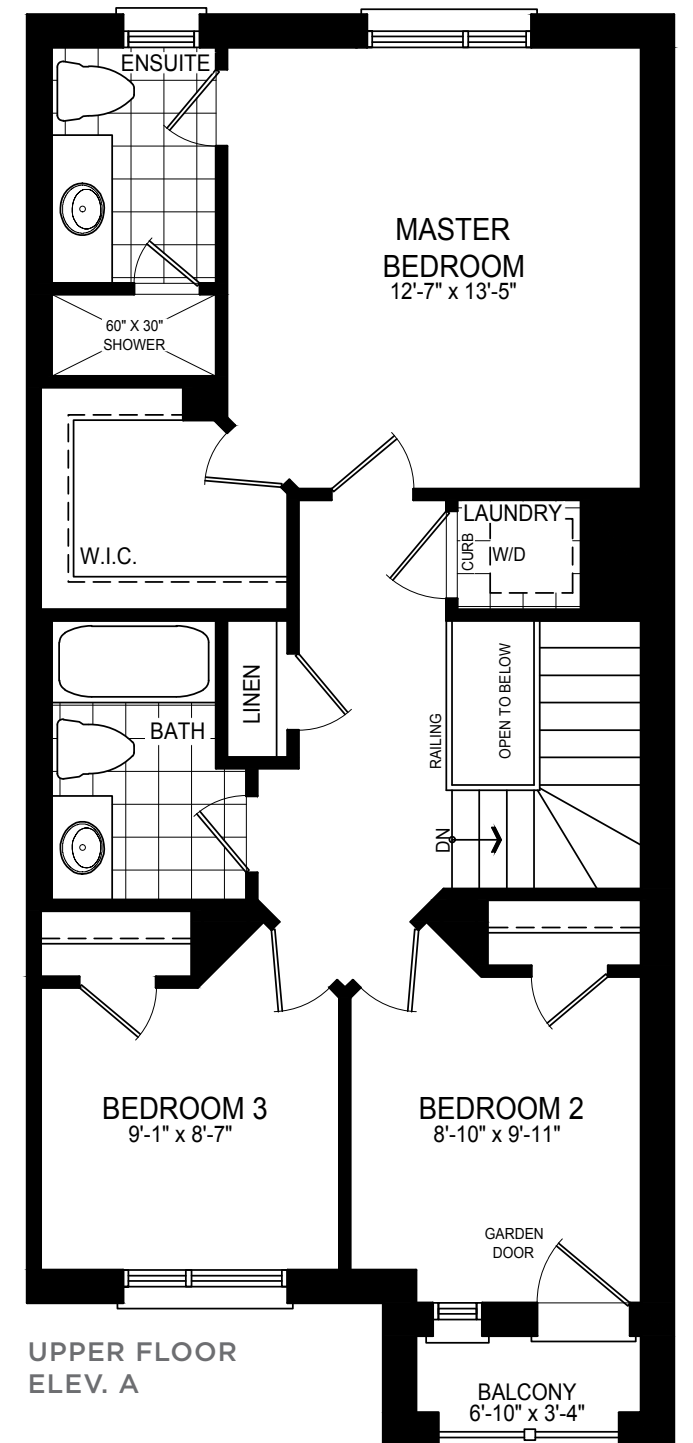
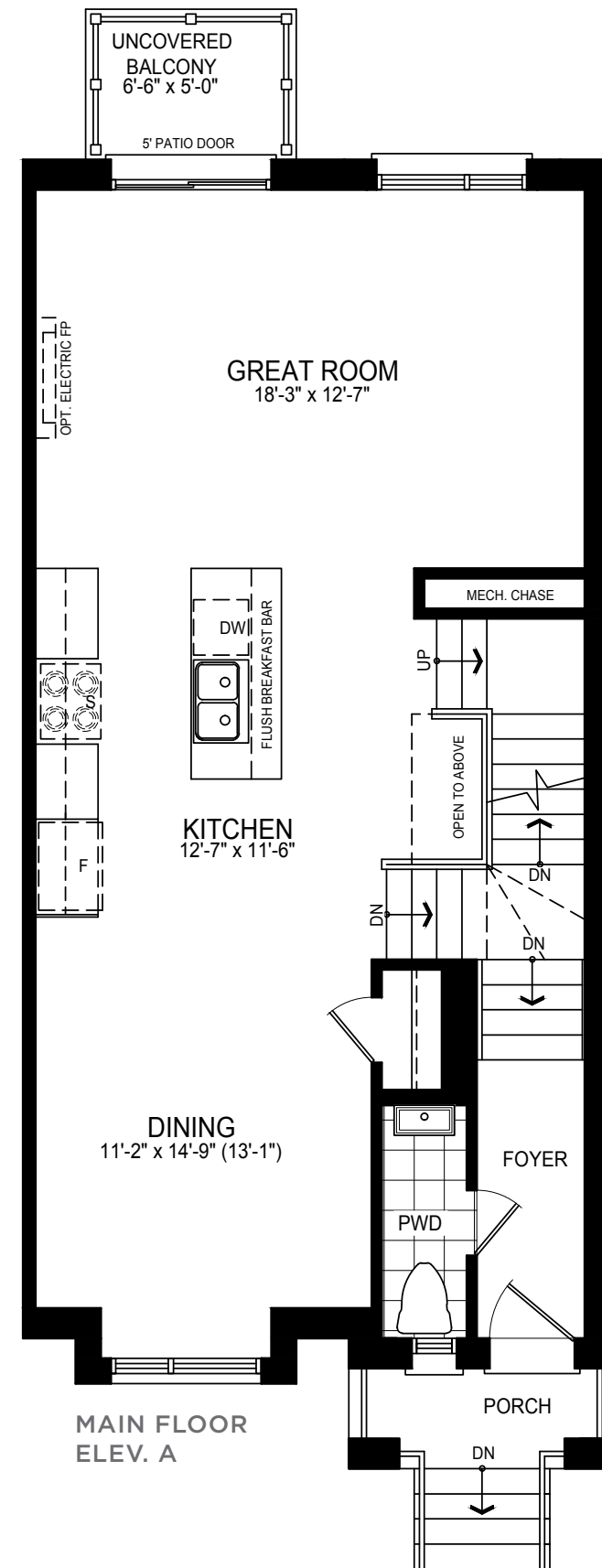
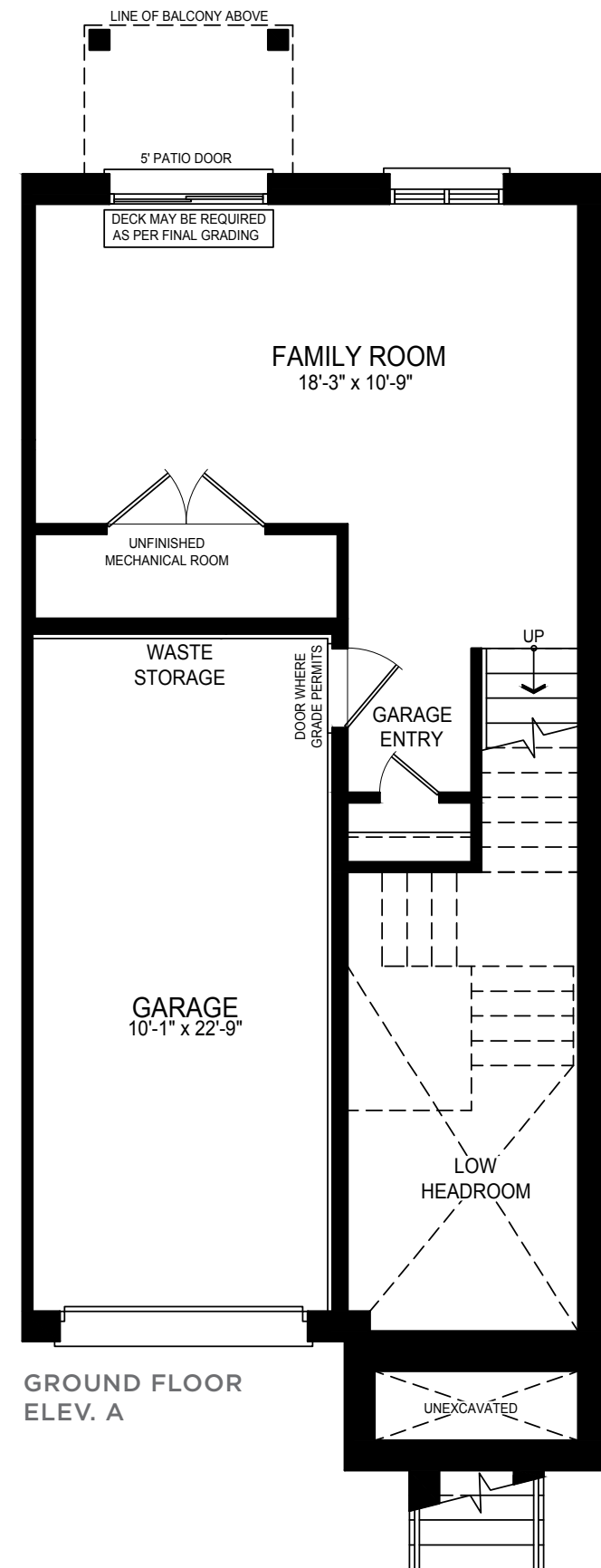
T 1  
ALTERNATE



NOTE: Orientation of home may be reversed and purchaser agrees to accept the same. Number of risers may vary at any exterior entranceways due to grading variance. Actual usable floor space may vary from stated floor area. All renderings are artist's impression. Dimensions, specifications, architectural and mechanical detailing are subject to minor modifications. Unit setback and roofline may vary due to siting. E. & O. E.

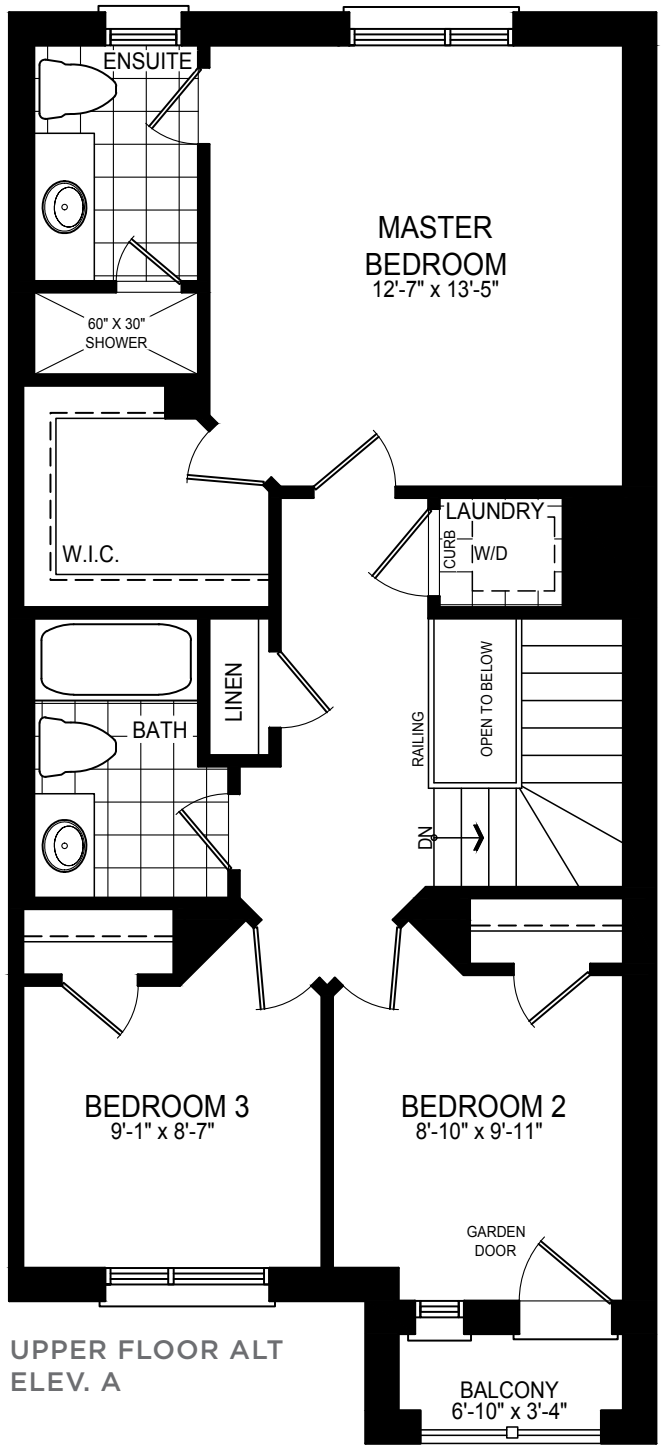
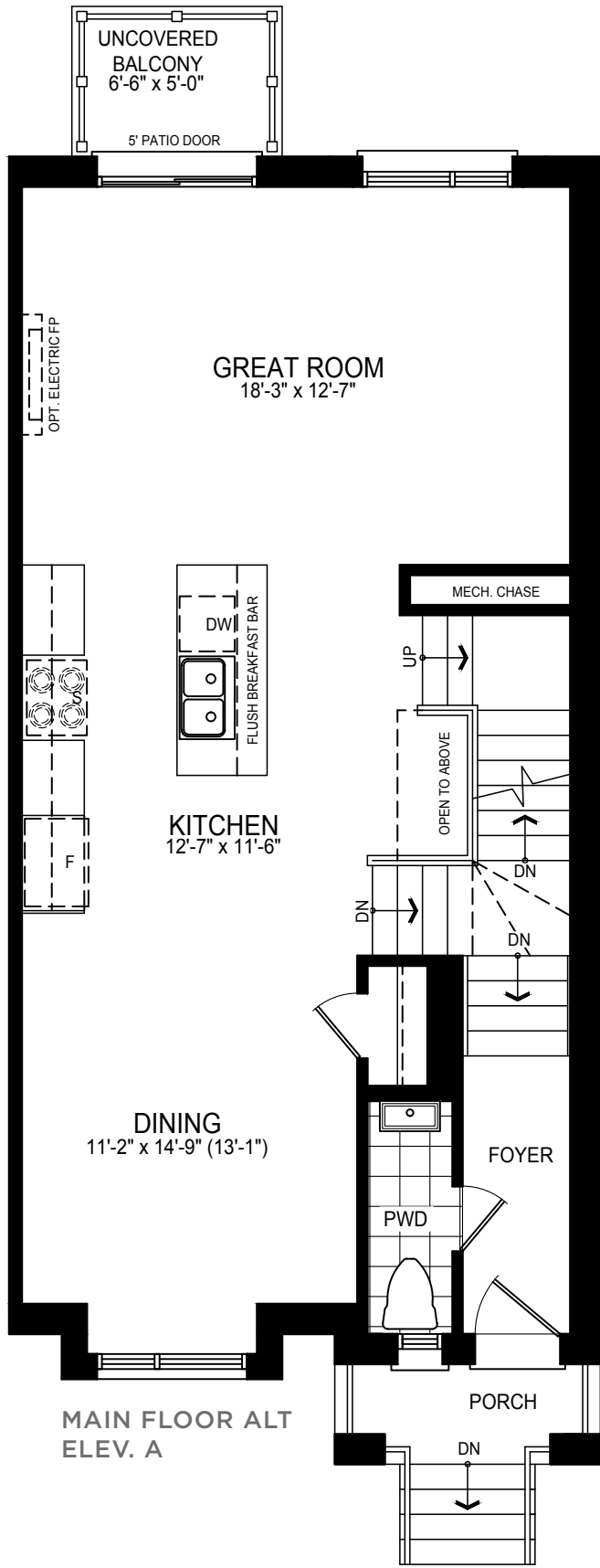
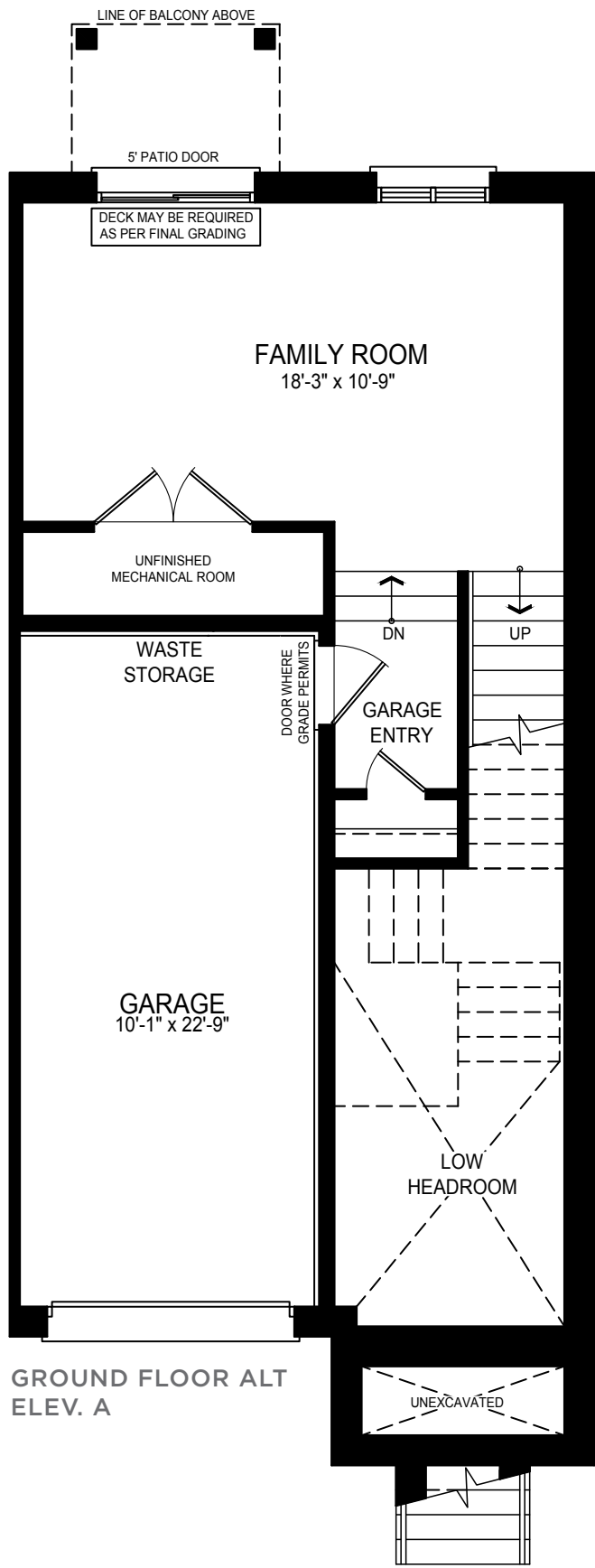


# T 2 END





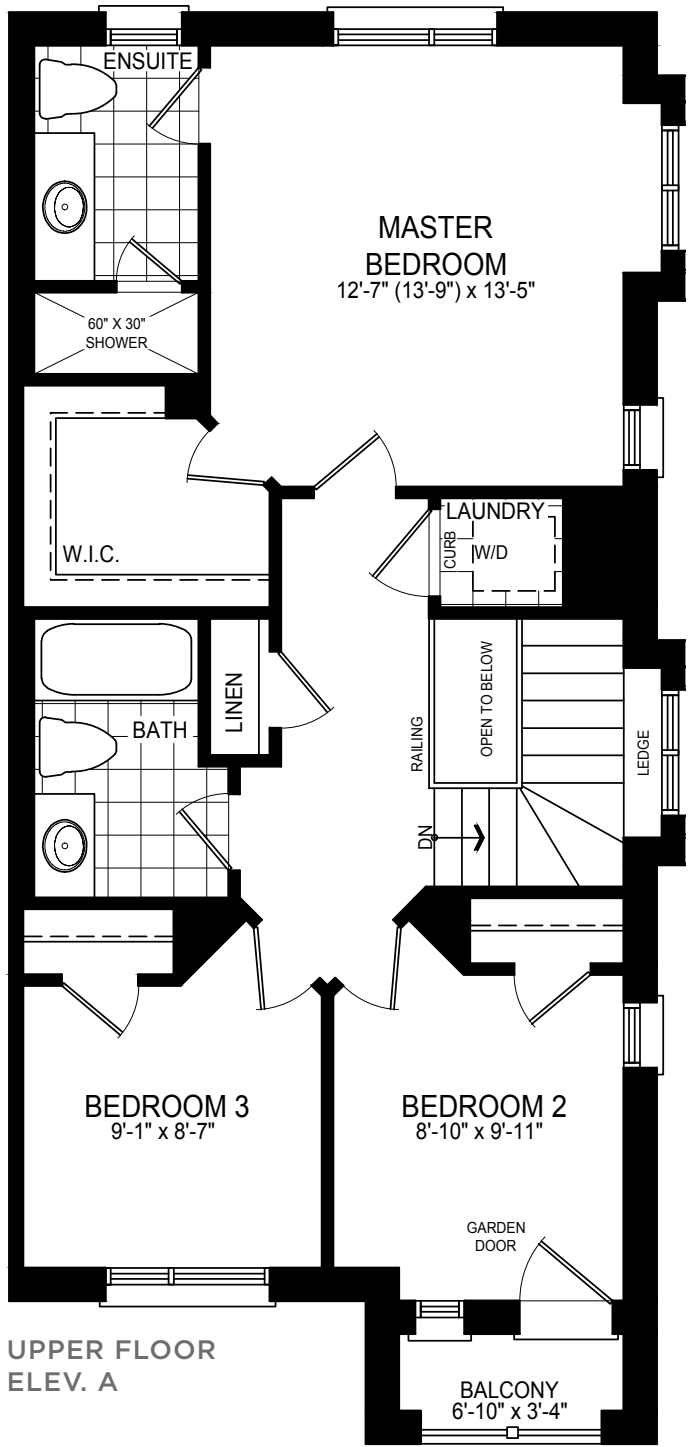
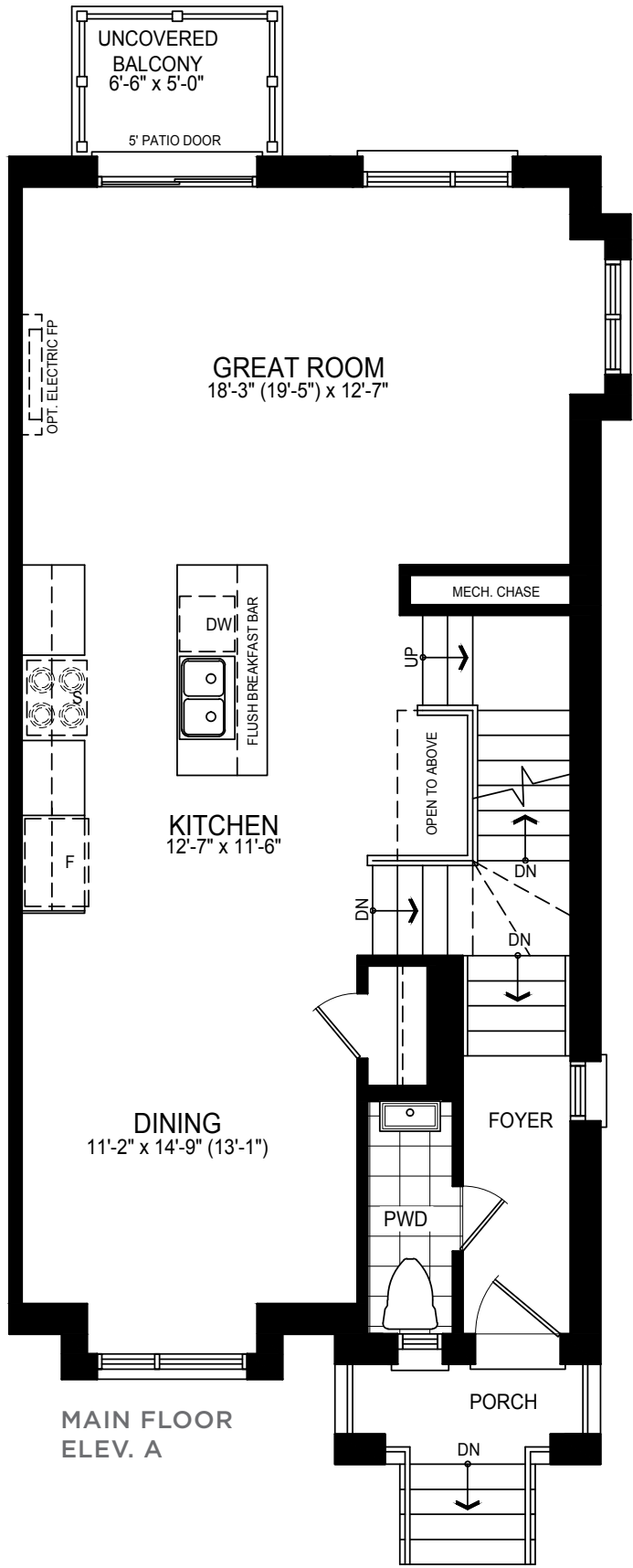
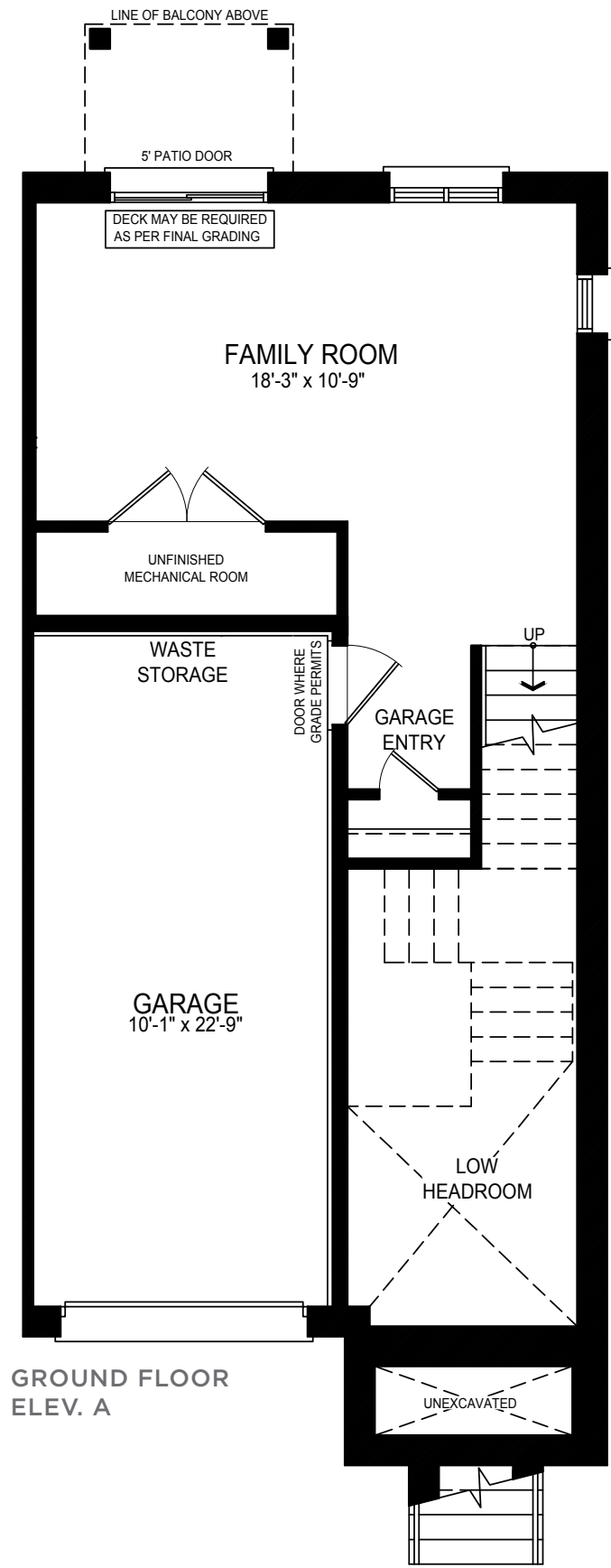
T 2  
END ALTERNATE



NOTE: Orientation of home may be reversed and purchaser agrees to accept the same. Number of risers may vary at any exterior entranceways due to grading variance. Actual usable floor space may vary from stated floor area. All renderings are artist's impression. Dimensions, specifications, architectural and mechanical detailing are subject to minor modifications. Unit setback and roofline may vary due to siting. E. & O. E.



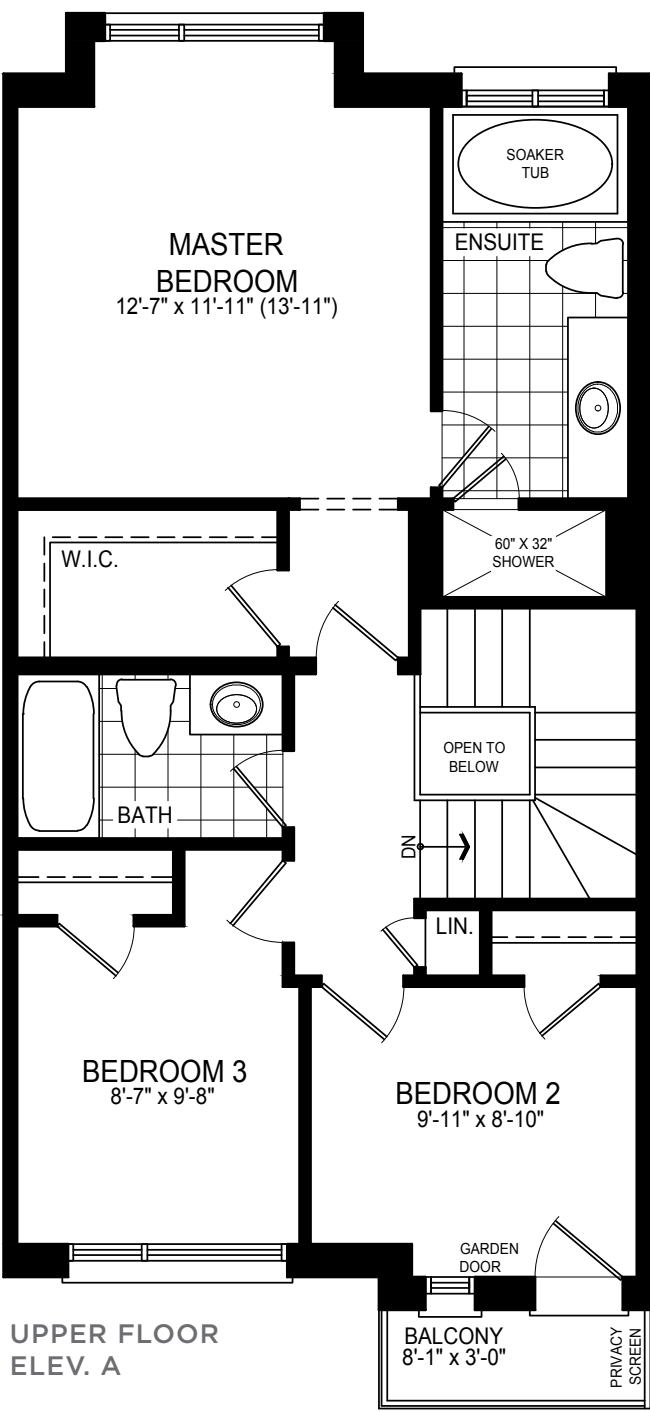
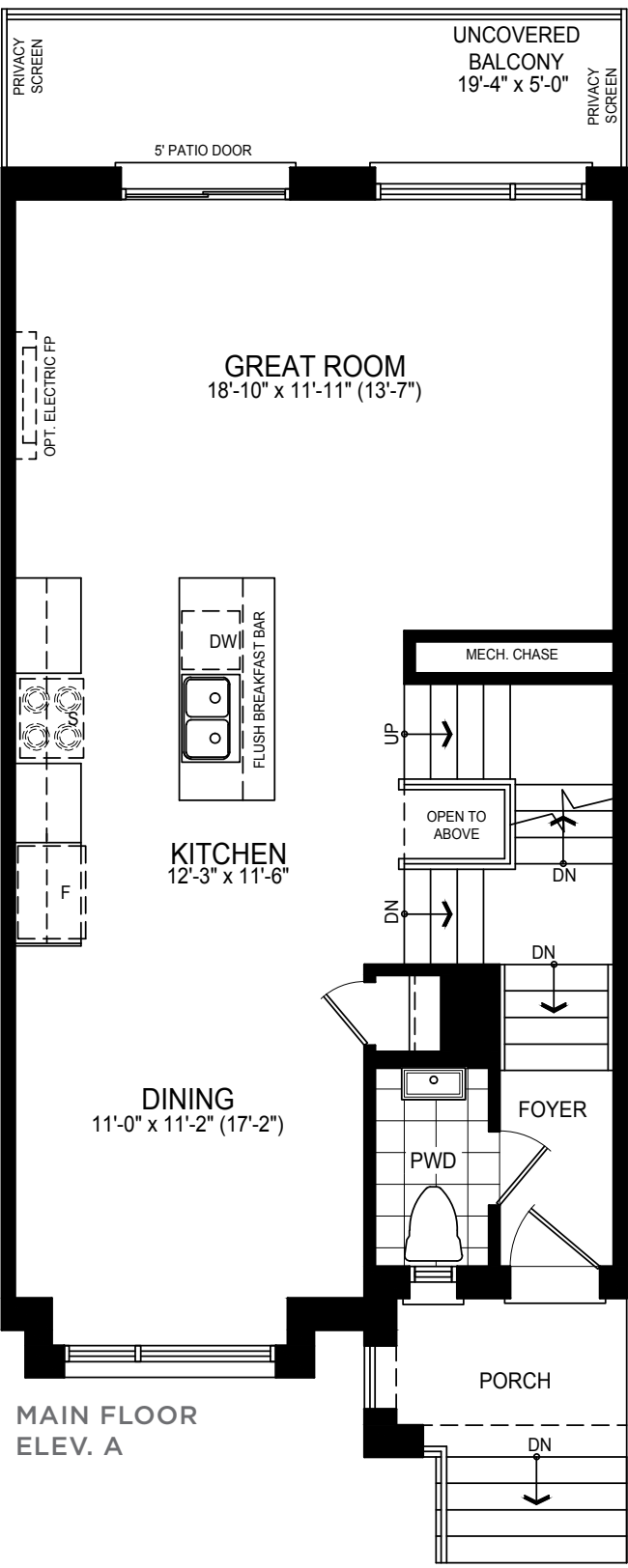
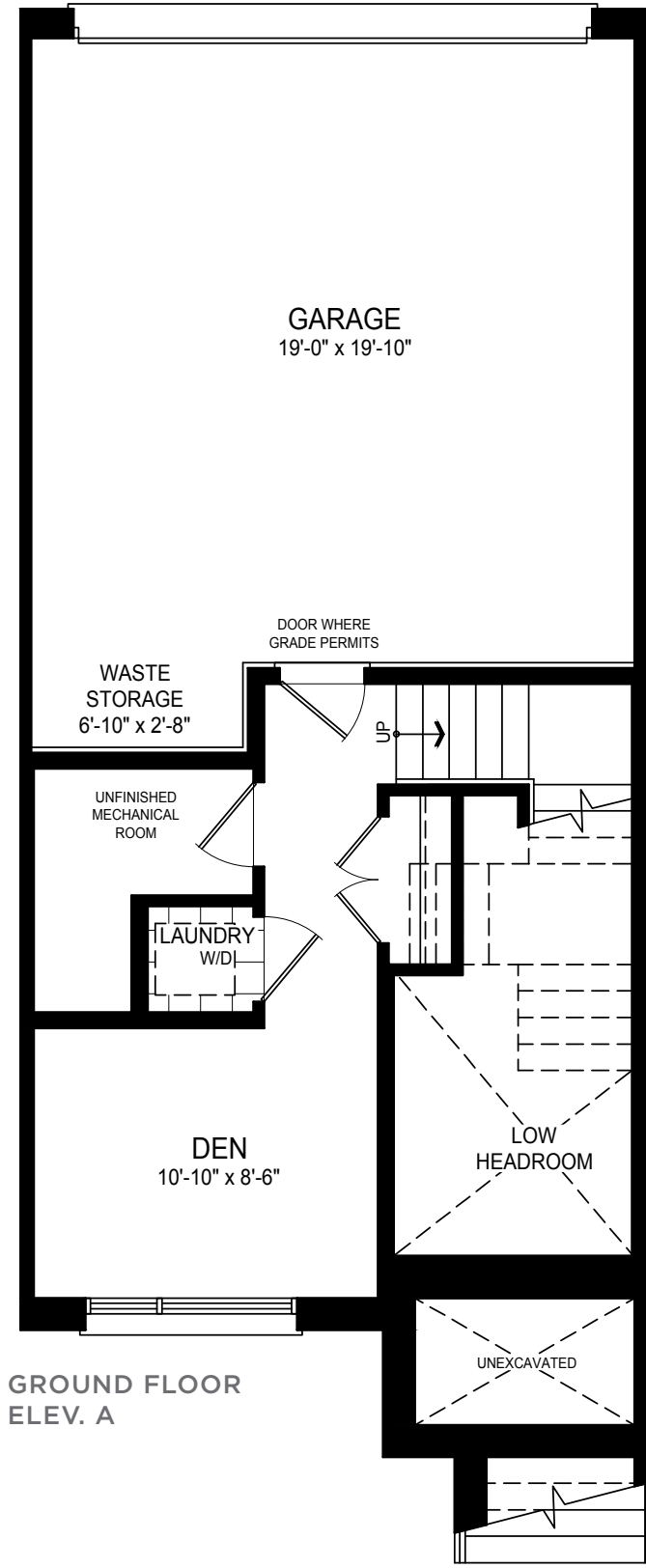
T 2  
CORNER



NOTE: Orientation of home may be reversed and purchaser agrees to accept the same. Number of risers may vary at any exterior entranceways due to grading variance. Actual usable floor space may vary from stated floor area. All renderings are artist's impression. Dimensions, specifications, architectural and mechanical detailing are subject to minor modifications. Unit setback and roofline may vary due to siting. E. & O. E.



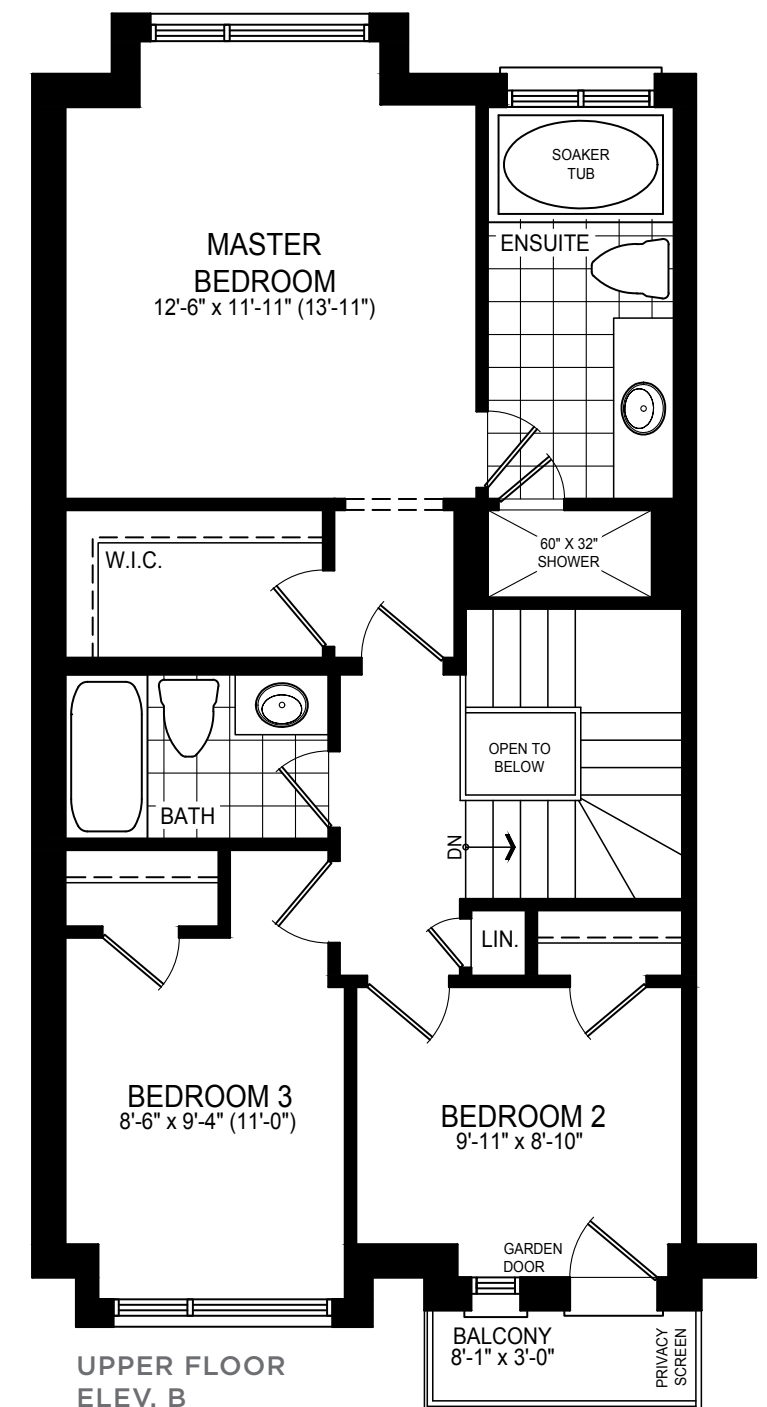
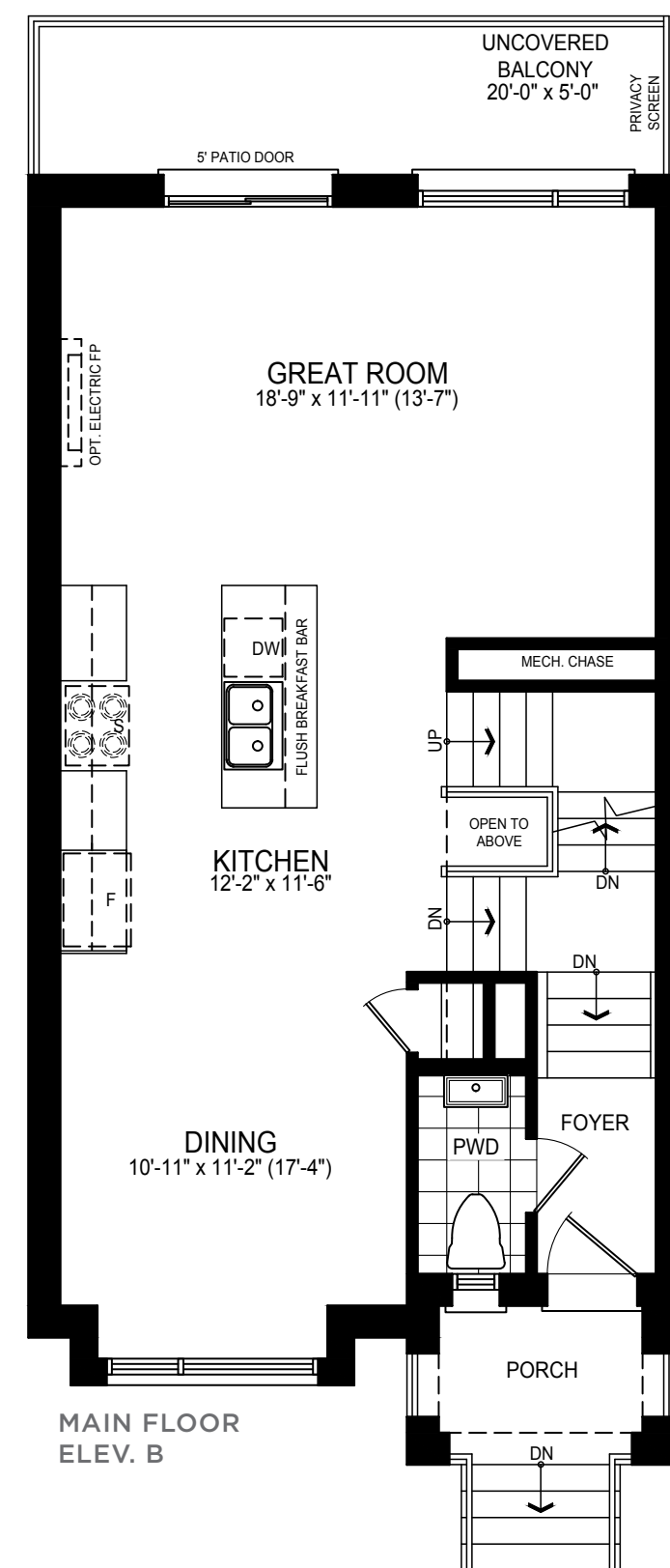
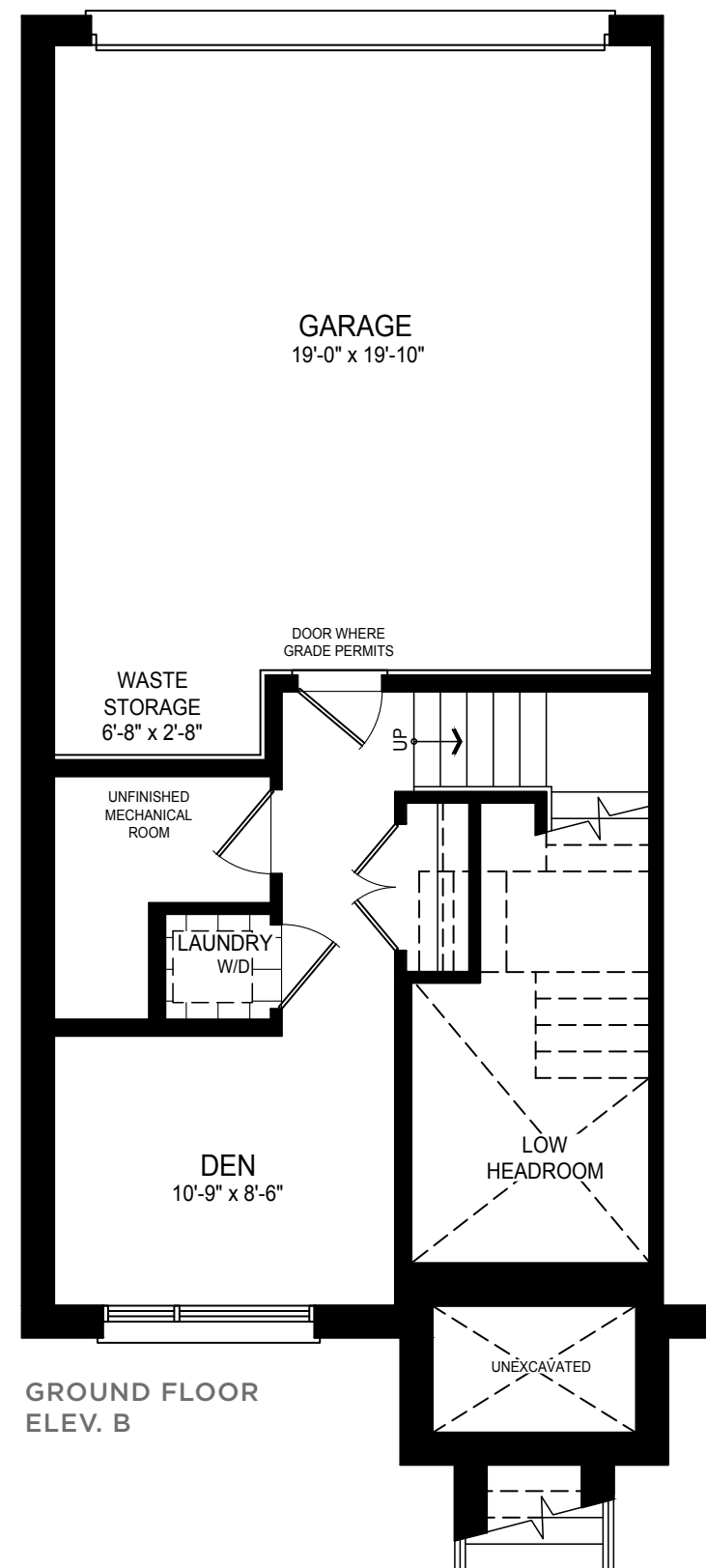
T 3



NOTE: Orientation of home may be reversed and purchaser agrees to accept the same. Number of risers may vary at any exterior entranceways due to grading variance. Actual usable floor space may vary from stated floor area. All renderings are artist's impression. Dimensions, specifications, architectural and mechanical detailing are subject to minor modifications. Unit setback and roofline may vary due to siting. E. & O. E.



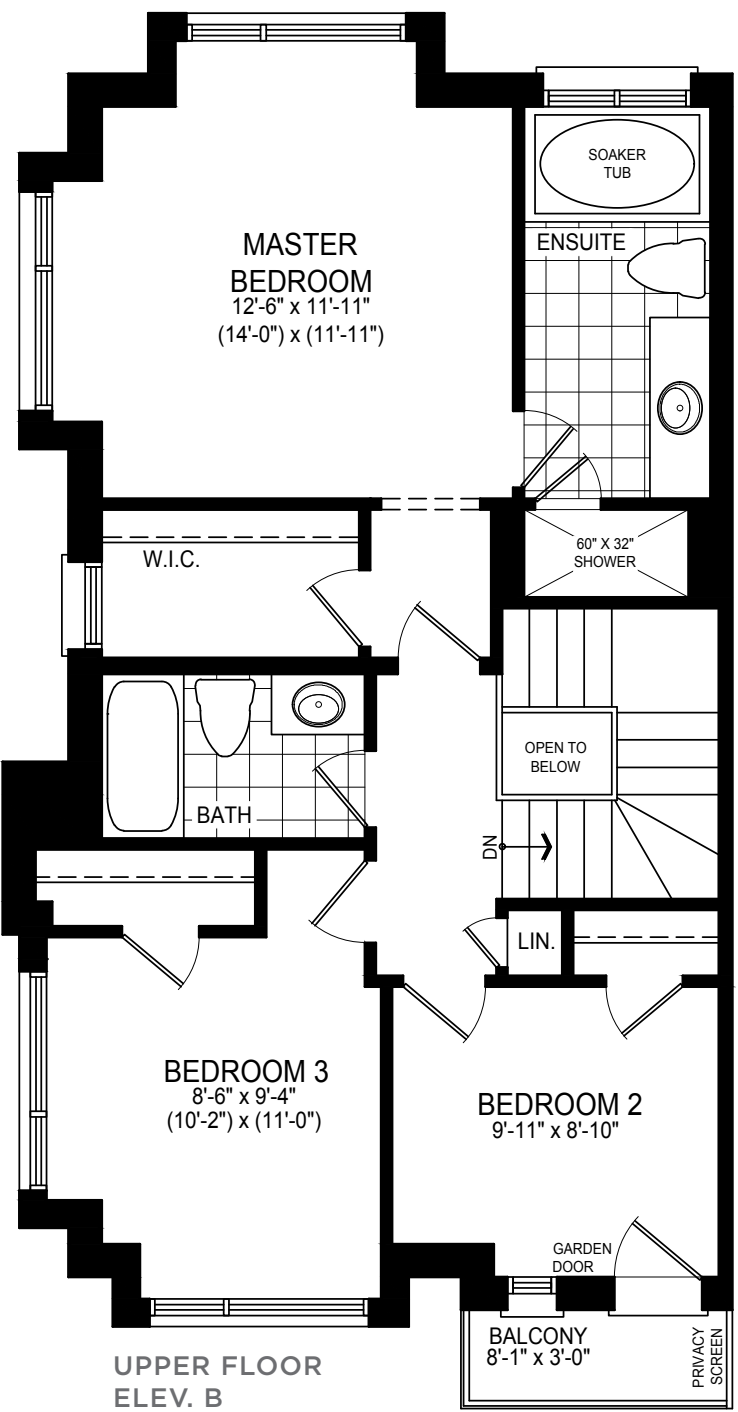
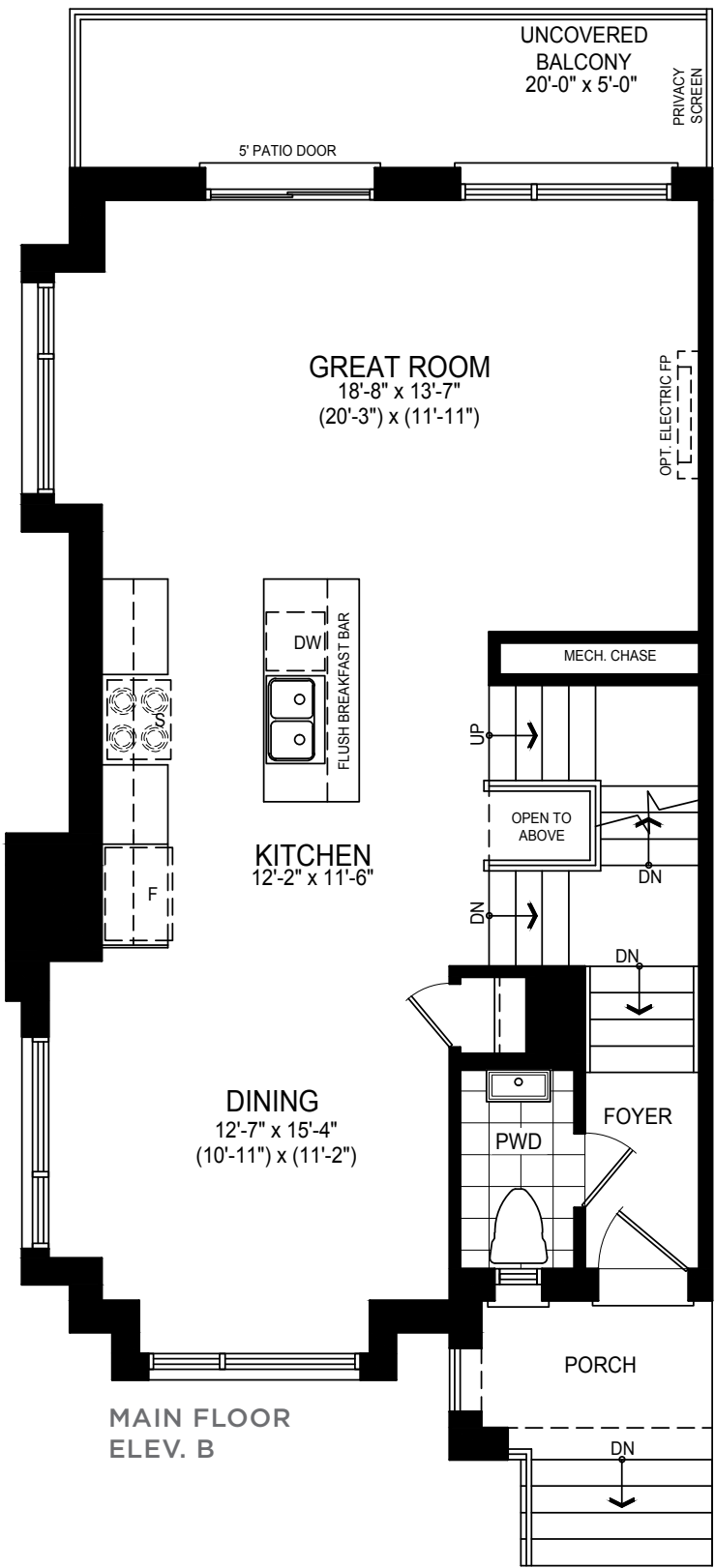
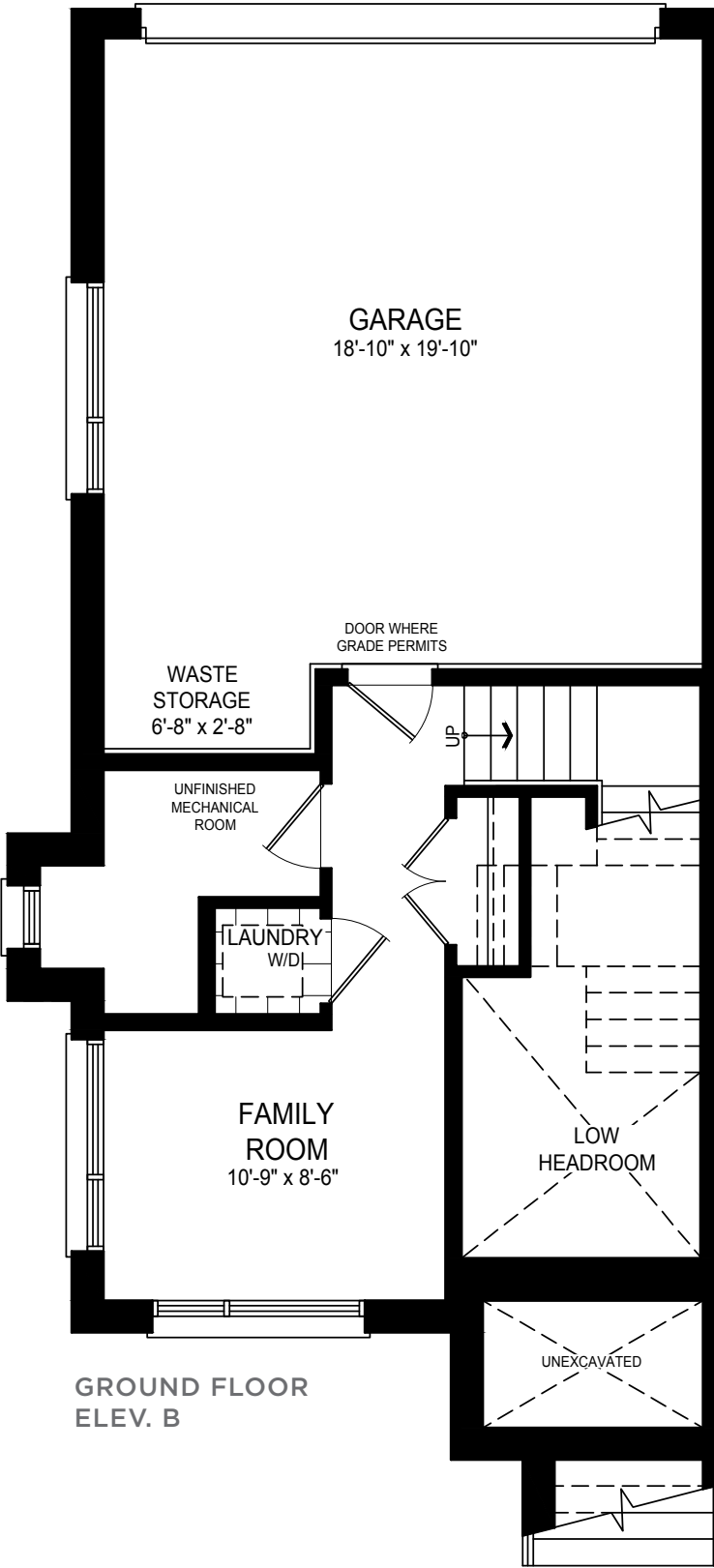
# T 4 END



NOTE: Orientation of home may be reversed and purchaser agrees to accept the same. Number of risers may vary at any exterior entranceways due to grading variance. Actual usable floor space may vary from stated floor area. All renderings are artist's impression. Dimensions, specifications, architectural and mechanical detailing are subject to minor modifications. Unit setback and roofline may vary due to siting. E. & O. E.



T 4  
CORNER



NOTE: Orientation of home may be reversed and purchaser agrees to accept the same. Number of risers may vary at any exterior entranceways due to grading variance. Actual usable floor space may vary from stated floor area. All renderings are artist's impression. Dimensions, specifications, architectural and mechanical detailing are subject to minor modifications. Unit setback and roofline may vary due to siting. E. & O. E.









TREASURE HILL

# Design Studio

Our Design Studio experts will assist you in selecting the perfect finishing touches to create the home you have been waiting for. The possibilities are plentiful, and await your desires and our expertise.

MODERN TOWNS



## Treasure Hill



Recipient of 2019 BILD Award  
for Project of the Year – Low Rise

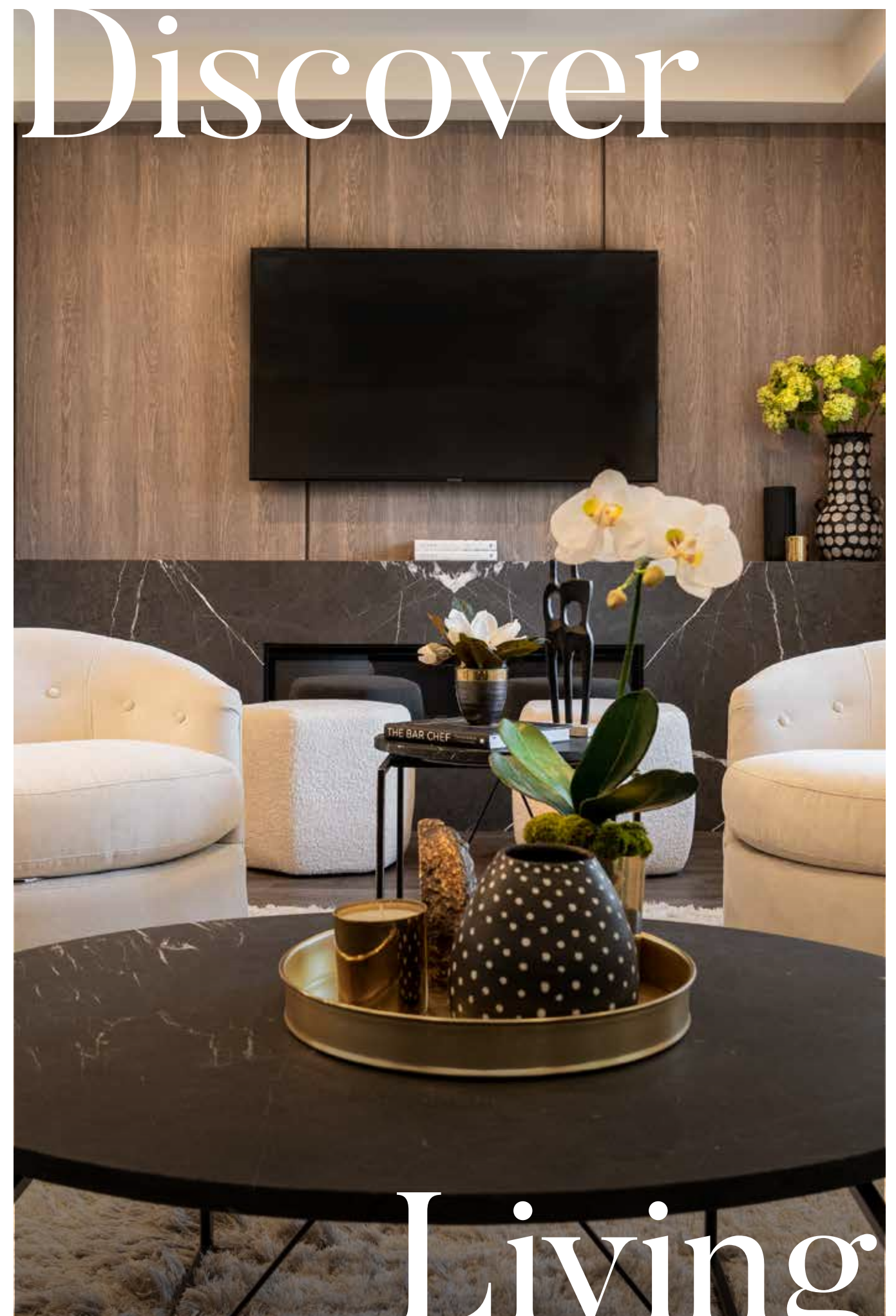
Our mission is to provide purchasers with homes that meet and exceed the highest industry standards. We take the journey of buying a new home and elevate it to a memorable experience. Treasure Hill has received multiple BILD awards over the years in acknowledgement of the quality we provide, and we bring this same quality to every home we build. Discover living the Treasure Hill way.



Greybrook Realty Partners is a Toronto-based private equity firm that invests in large-scale real estate development and value-add assets. Over the years, Greybrook has built a strong reputation for its ability to create value for its investors, partners and communities.

Ranging from single-family homes, condominiums and purpose-built rental, to ultra-luxury condominium residences and retail, Greybrook's diversified real estate portfolio includes investments in more than 70 projects that represent over 35 million square feet of residential and commercial density in aggregate, with an estimated completion value of \$15 billion.

# Discover



# Living



EVOKE IMAGINATION